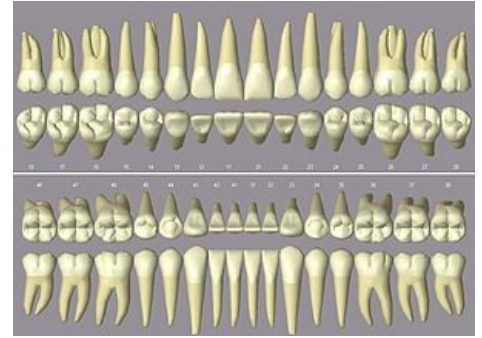


Lower permanent incisors

The **lower permanent incisors** are very similar in shape, they differ only in size. The lower central permanent incisor is the smallest permanent tooth. In general, the lower permanent incisors are gracile and therefore difficult to use prosthetically. There is also frequent compression and associated rotation. Crown has a so-called chisel-like shape. These are pillars III. classes according to Voldřich.

- The **labial surface** is slightly convex with a smooth surface. Similar to the upper antagonist, there is serration on the incisal edge.
- The **lingual surface** is slightly concave with a distinct tuberculum dentale. Marginal approximal bars are not very prominent in these teeth.
- **Approximal surfaces** have the shape of a triangle and pass at a right angle to the incisal edge.
- The **root of the middle lower incisor** is straight, conical and flattened on the sides. The **root of the lower lateral incisor** quite often has a distal inclination. Both have a longitudinal groove on the sides of the root.



Human teeth

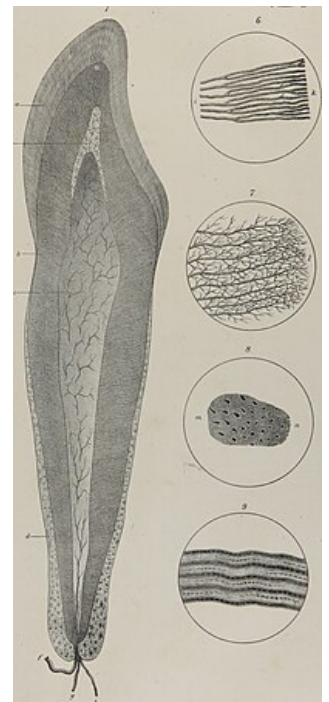
Links

Related Articles

- Upper central permanent incisor
- Upper lateral permanent incisor
- Upper Permanent Canine
- Lower permanent canine

References

- JANSOVÁ, K – EBER, M. *Preclinical Dentistry : I. part - morphological*. 2nd edition. Palacký University Publishing House, 1996. 72 pp. pp. 39-55. ISBN 80-7067-596-9.
- GRAY, George – FOLTAN, Rene. *Clinical anatomy of teeth and jaws*. 1. edition. Triton, 2010. ISBN 978-80-7387-312-7.



Incisor