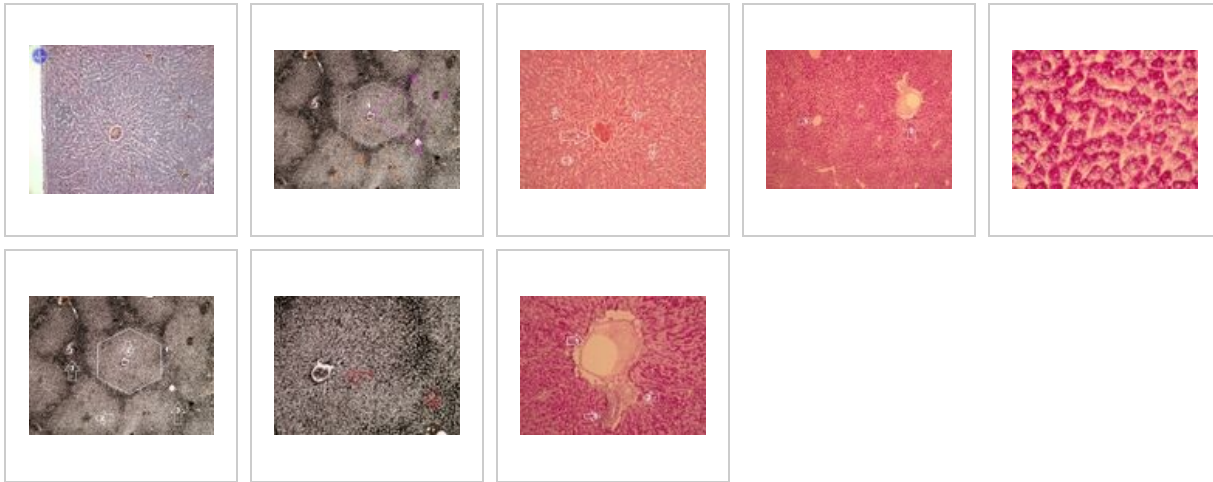
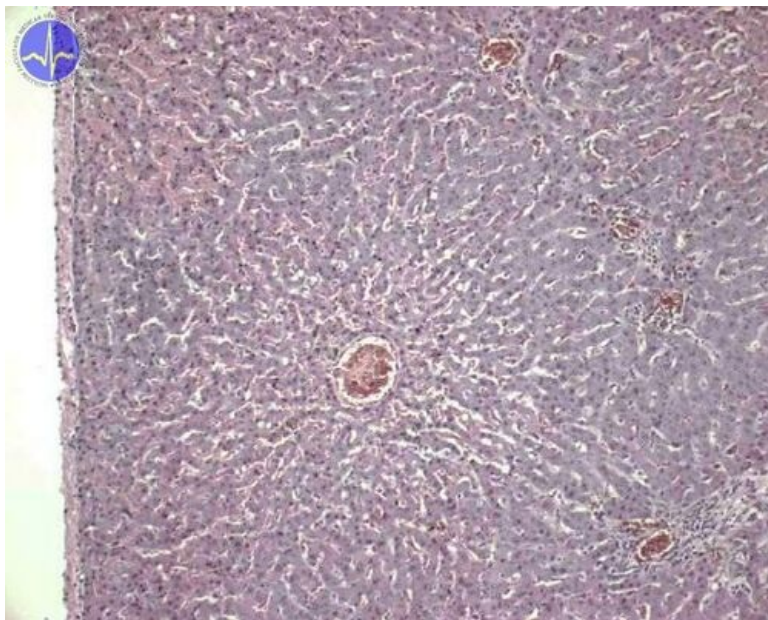


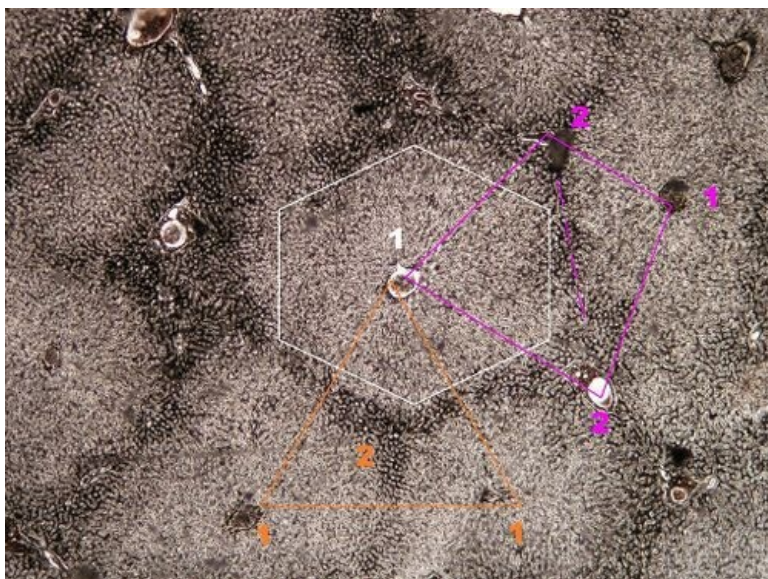
# Liver (SFLT)



## Liver - clear magnification (HE)



## Liver - morphological, functional and circulatory unit (silvering)

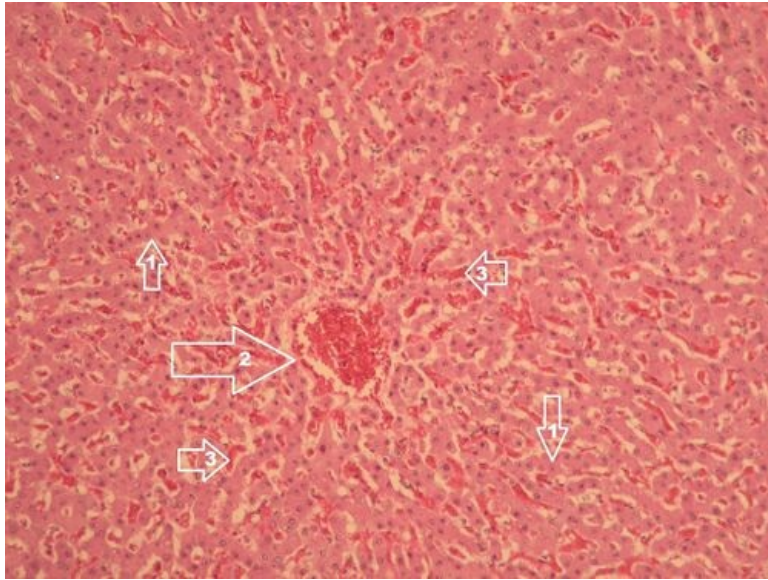


**Description:** 1 - vena centralis, 2 - portobiliary space with triad (arteria, vena et ductus bilifer interlobularis)  
*white* - **lobulus venae centralis** (basic morphological unit, hexagon, in the center is v.centralis)

*orange* - **lobulus portalis** (basic circulatory unit, triangle, vertices in 3 vv. centrales, portobiliary space in the middle)

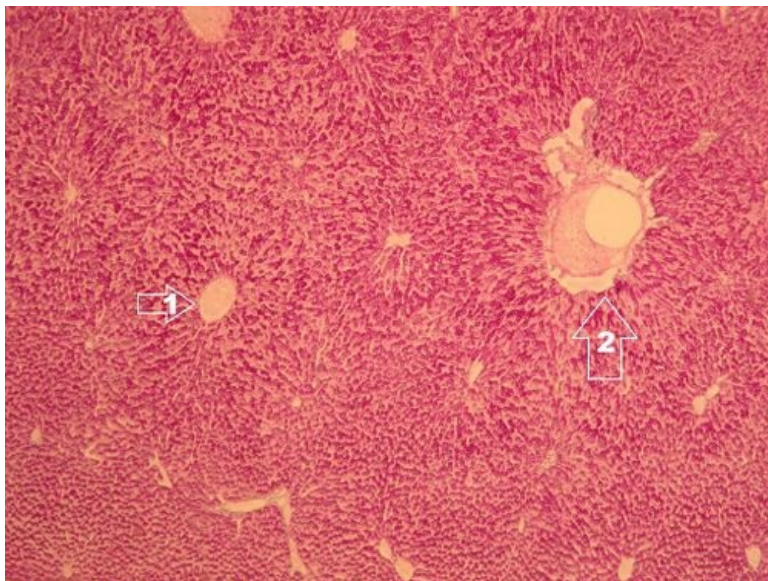
*pink* - **acinus hepaticus** (basic functional unit, quadrilateral, 2 vertices in vv. centrales and 2 in portobiliary spaces, pink dashed line shows course of a. et v. circumlobularis).

## Liver - detailed liver lobule (lobulus venae centralis) - HE



**Description:** 1 - beams of hepatocyte, 2 - vena centralis, 3 - liver sinusoids filled with erythrocytes.

## Liver - glycogen evidence (PAS reaction)

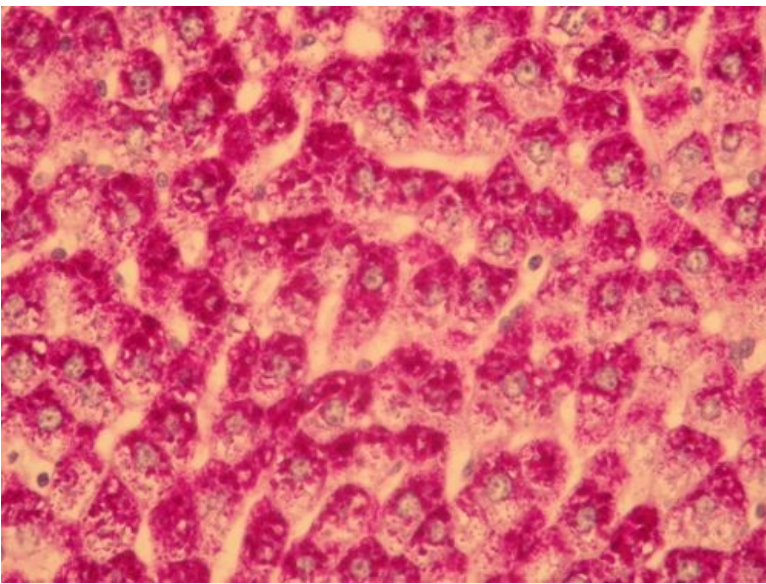


**Description:** Glycogen granules in hepatocytes, colored purple.

1 - vena centralis, 2 - portal triad.

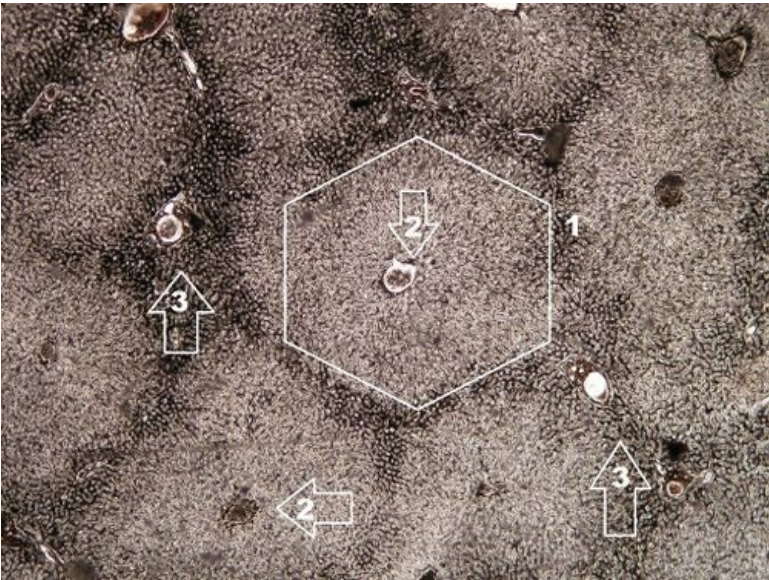
## Liver - glycogen evidence (PAS reaction)





**Description:** Glycogen granules in hepatocytes, colored purple.

**Liver - evidence of reticular fibers (silvering)**



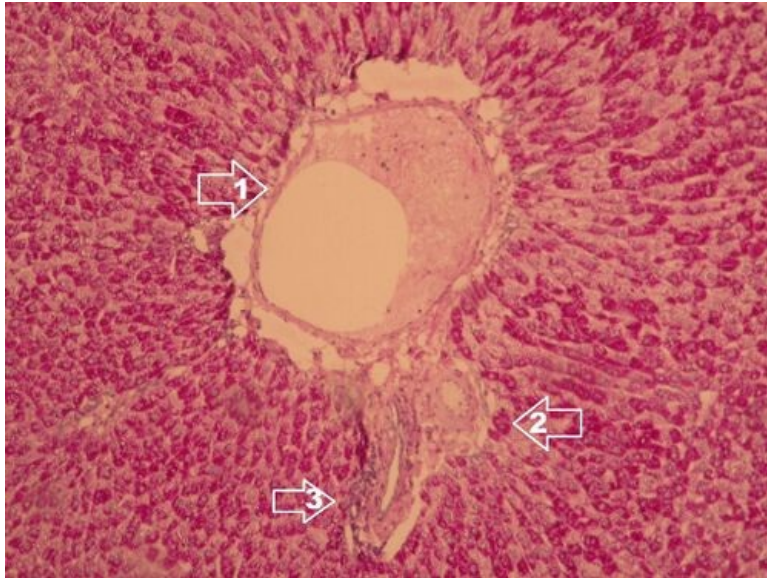
**Description:** 1 - liver lobule (lobulus venae centralis), 2 - vena centralis of liver lobule, 3 - portobiliary space with Glisson's triad (vena interlobularis, arteria interlobularis and ductus bilifer interlobularis).

**Liver - evidence of reticular fibers (silvering), detailed liver lobule (lobulus venae centralis)**



**Description:** 1 - vena centralis of liver lobe, 2 - portobiliary space with Glisson's triad (vena interlobularis, arteria interlobularis, ductus bilifer interlobularis).

## Liver - glycogen evidence (PAS) and detailed portal triad



**Description:** Portal triad: 1 - vena interlobularis, 2 - ductus bilifer interlobularis, 3 - arteria interlobularis.

## Gastrointestinal tract

- Dorsum of tongue (SFLT)
- Tongue - radix (SFLT)
- Tongue - tonsilla lingualis (SFLT)
- Gl. submandibularis (SFLT)
- Gl. parotis (SFLT)
- Gl. sublingualis (SFLT)
- Esophagus (SFLT)
- Gaster - cardia (SFLT)
- Gaster - fundus (SFLT)
- Pylorus - duodenum (SFLT)
- Duodenum (SFLT)
- Small intestine (SFLT)
- Colon (SFLT)
- Appendix (SFLT)
- Liver (SFLT)
- Gallbladder (SFLT)
- Pancreas (SFLT)

## Links

- Histology atlas (3. LF UK)