

Leydig Cells

Leydig cells are rounded (polygonal) cells of the **testicular interstitium** with a centrally located nucleus and eosinophilic cytoplasm. Their main function is the production of male sex hormones, mainly **testosterone**. Their function is influenced by the luteinizing hormone of the anterior lobe of the pituitary gland.

Leydig cells can also rarely appear in women as part of the so-called ovarian Sertoli-Leydig tumor. ^[1]

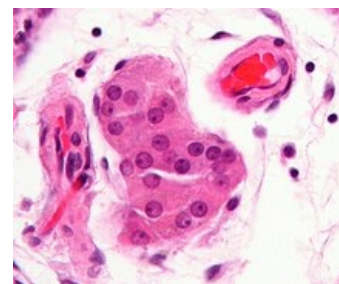
Links

Related articles

- Sertoli cells
- Testicle
- Sperm

Sources

- VOKURKA, Martin – HUGO, Jan. *Velký lékařský slovník*. 9. edition. Maxdorf, 2009. pp. 1159. ISBN 978-80-7345-202-5.
 - JUNQUIERA, L. Carlos – CARNEIRO, José – KELLEY, Robert O. *Základy histologie*. 1. edition. H & H, 1997. pp. 502. ISBN 80-85787-37-7.
1. GERSHENSON, David M. *Sex cord-stromal tumors of the ovary: Sertoli-stromal cell tumors* [online]. The last revision 2018-09-13, [cit. 2023-01-20]. <https://www.uptodate.com/contents/sex-cord-stromal-tumors-of-the-ovary-tumors-with-granulosa-and-sertoli-leydig-elements?search=sex%20cord-stromal%20tumours&source=search_result&selectedTitle=2~150&usage_type=default&display_rank=2>.



Leydig Cells