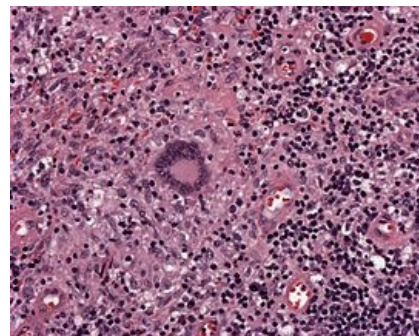


Langerhans cells

They are huge multinucleated elements found in granulomas . They are characterized by their extensive cytoplasm and several tens to hundreds of nuclei arranged in the shape of a wreath around the entire perimeter of the cell or in the shape of a horseshoe. They are often part of immune granulomas in specific inflammations sarcoidosis and TBC.

Their formation by the fusion of epithelioid macrophages is induced by the secretion of IFN- γ by CD4+ T-lymphocytes.



Links

References

- POVÝŠIL, Ctibor – ŠTEINER, Ivo. *Obečná patologie*. 1. edition. Prague : Galén, 2011. 290 pp. ISBN 978-80-7262-773-8.
- VOKURKA, Martin – HUGO, Jan, et al. *Velký lékařský slovník*. Jessenius edition. Prague : Maxdorf, 0000. 1008 pp. ISBN 80-7345-058-5.
- Wikipedia: the free encyclopedia [online]. San Francisco (CA): Wikimedia Foundation, 2001- [cit. 2014-02-25]. Dostupné z: https://en.wikipedia.org/wiki/Langhans_giant_cell
- Sakai H, Okafuji I, Nishikomori R, et al. (January 2012). "The CD40-CD40L axis and IFN- γ play critical roles in Langhans giant cell formation". *Int. Immunol.* 24 (1): 5–15. doi:10.1093/intimm/dxr088. PMID 22058328