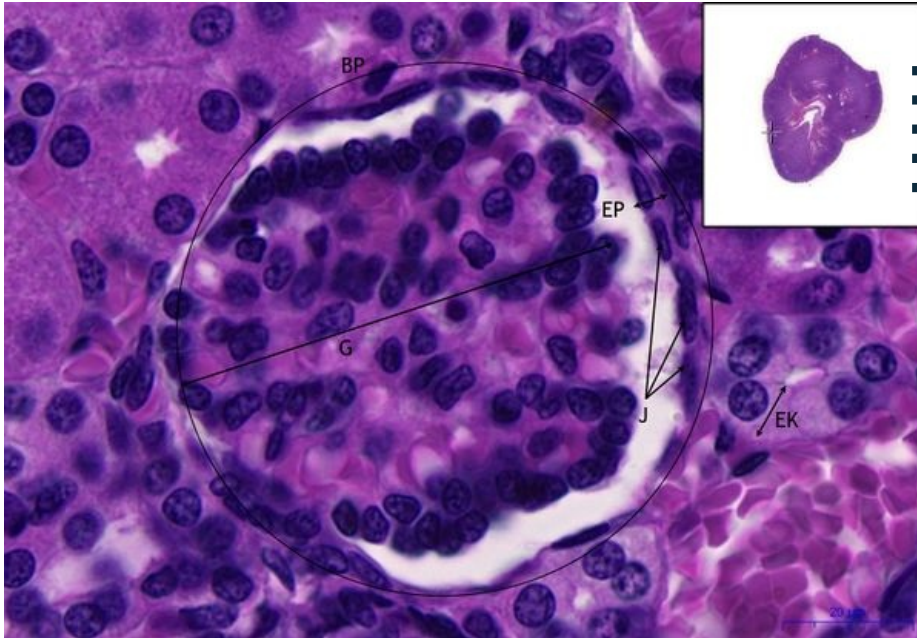


# Kidney - HE

## Module B

[Expand]

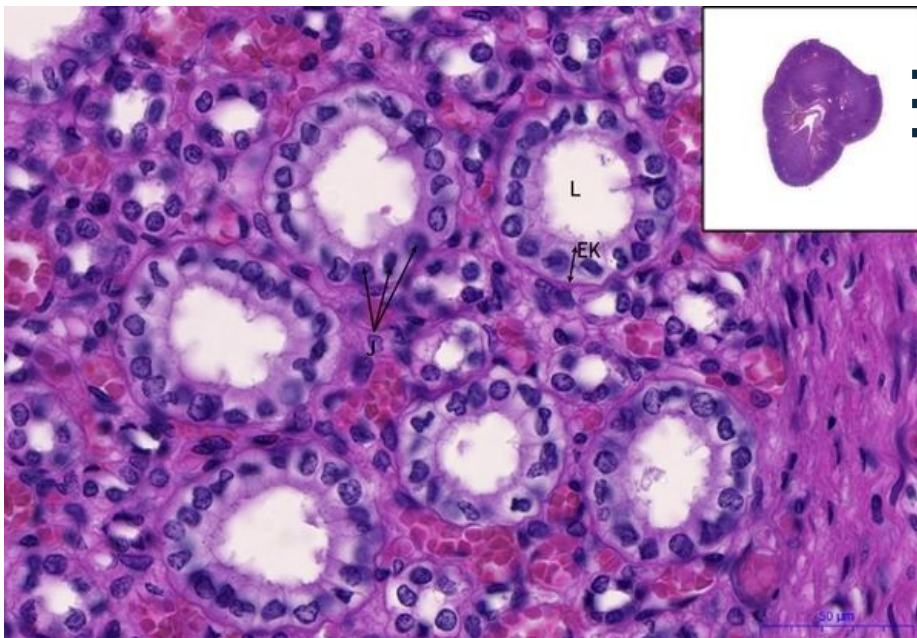
### Kidney - HE, 73x



Simple squamous epithelium:

- **EP** - simple squamous epithelium
- **EK** - cuboidal epithelium
- **BP** - Bowman capsule
- **G** - glomerulus
- **J** - cell nucleus

### Kidney - HE, 86.8x



Simple cuboidal epithelium:

- **EK** - cuboidal epithelium
- **L** - lumen
- **J** - cell nucleus

**Other examples / Other examples:**

Thyroid gland, excretory ducts, distal convoluted tubule

Navigation: Epithelia - Epithelial tissue

## Module A

[Expand]