

# Kehr's sign



**Pain and hypoesthesia in the left shoulder** (most often above the left shoulder blade) caused by **irritation of the nervus phrenicus with blood in the diaphragm area**. It is most often observed during **splenic rupture**, and less often by oviduct rupture during tubal pregnancy.

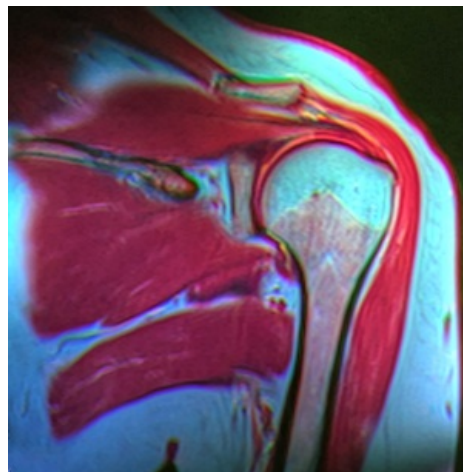
## Links

### Related articles

- Bleeding
- Spleen

### References

- HOCH, Jiří – LEFFLER, Jan. *Speciální chirurgie : učebnice pro lékařské fakulty*. 2. edition. Praha : Maxdorf, 2003. ISBN 80-85912-06-6.



Shoulder in cross section