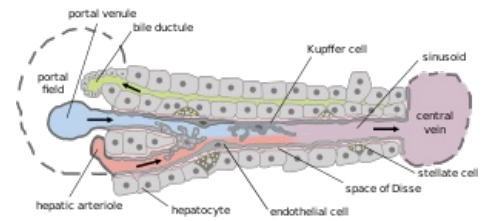


# Ito Cells

**Ito cells (stellate cells)** are cells of mesenchymal origin located in the **perisinusoidal space** of the liver lobules. Their cytoplasm contains large lipid droplets used to store **vitamin A**. Under certain pathological circumstances, e.g. after injury, alcohol damage or infection, Ito cells can differentiate into **myofibroblast-like cells** and **synthesize excessive amounts of extracellular matrix**, especially collagen type I and III. Thereby they cause **fibrotization of the liver**. Ito cells are also significantly involved in **liver regeneration**.



Schematic representation of the structure of the liver lobule. It's cells are labeled as "stellate cells".

## Links

### Related Articles

- Liver
- Liver Fibrosis
- Liver Regeneration

### Liver as a histological preparation:

- Collection of histological specimens (1. LF UK)/Digestive system
- Liver (SFLT)

## References

- LÜLLMANN-RAUCH, Renate. *Histologie*. 1. edition. Praha : Grada, 2012. 576 pp. ISBN 978-80-247-3729-4.
- MESCHER, Anthony L – JUNQUEIRA, Luiz Carlos Uchôa. *Junqueira's Basic Histology*. 12. edition. United States : McGraw-Hill Education - Europe, 2009. 480 pp. ISBN 9780071630207.
- VÁLEK, Vlastimil – KALA, Zdeněk, et al. *Maligní ložiskové procesy jater : diagnostika a léčba včetně minimálně invazivních metod*. 1. edition. Praha : Grada, 2006. ISBN 80-247-0961-9.