

# Inguinal ligament

**Ligamentum inguinale ( Pouparti )**, or inguinal ligament, is a caudally located tendinous, reinforced strip of the aponeurosis of *the obliquus externus abdominis muscle*. This ligament extends on *the os coxae* from *the spina iliaca anterior superior* to *the tuberculum pubicum*.

Approximately from the middle of the ligament, a fibrous strip - *arcus iliopectineus* - divides the subligamentous space into two - *lacuna musculorum* (laterally) and *lacuna vasorum* (medially). Muscles, nerves and blood vessels pass through these spaces from the abdominal cavity and from the pelvis to the thigh and then to the entire lower limb.

It divides into **three small separate ligaments**:

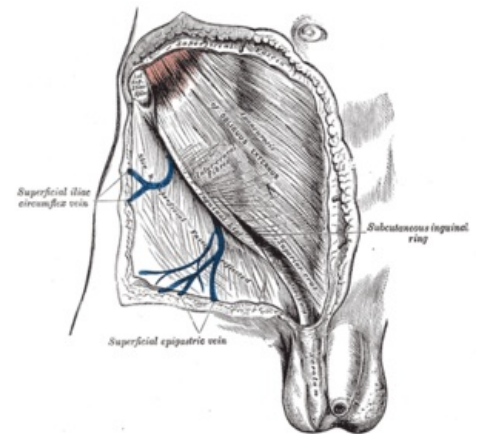
- *ligamentum lacunare* (Gimbernati) – bundles that converge medially and line the inner part of the lacuna vasorum;
- *ligamentum reflexum* (Collesi) – forms the mediocaudal boundary of the exit of *the canalis inguinalis*;
- *ligamentum pectineale* (Cooperi) – attaches to the tuberculum pubicum.

## Related Articles

- Inguinal canal
- Lacuna musculorum
- Lacuna vasorum

## References

- ČIHÁK, Radomír. *Anatomie 1*. 3. edition. Grada, 2011. ISBN 9788024738178.



Inguinal region