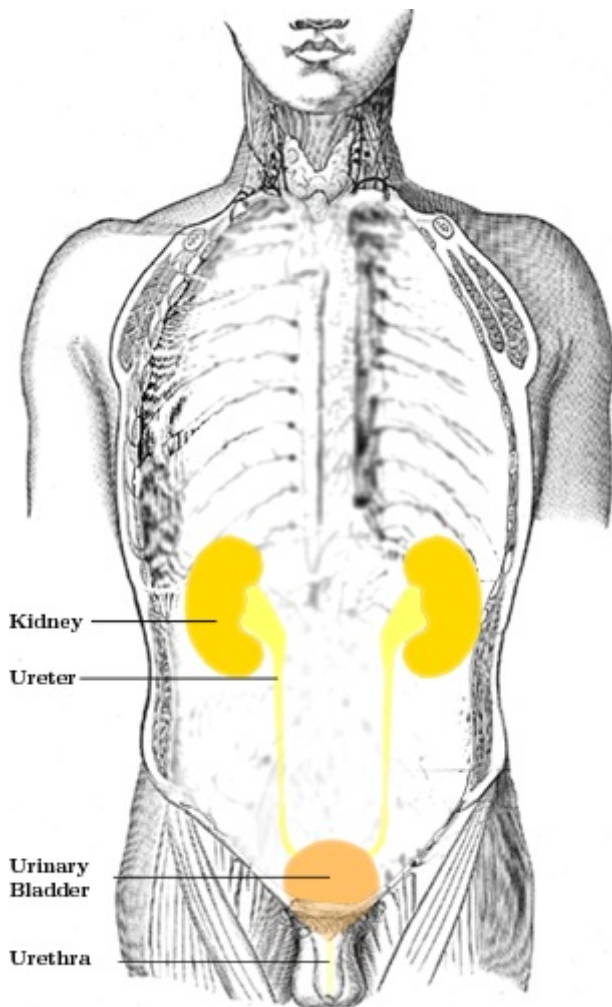


Infections of Kidneys and Urinary Tract

Urinary tract infection -is a bacterial infection that affect any part of the urinary tract.



Types

Cystitis is most likely from a bladder infection. Pyelonephritis is most likely because of a upper urinary tract or kidney infection.

Most commonly due to: E.Coli (50-80%) Klebsiella (8-10%) Staphylococcus saprophyticus (10-30%) Proteus, Pseudomonas

Epidemiology

Women to men 10:1 (short urethra colonized by fecal flora)

Risk Factors

- Sexual activity
- Gender
- Urinary catheters
- Urine flow obstruction (stones)
- Diabetes, Pregnancy, Immunocompromise state
- Vesicoureteral reflux
- Symptoms:
- Cystitis
- Burning with urination
- Frequency and urgency of urination
- Suprapubic pain
- Hematuria
- Smelly urine
- Pyelonephritis
- Flank pain
- Fever

- Chills

Acute Pyelonephritis - is an ascending UTI that has reached the pelvis of the kidney.

Present with: Disuria, Abdominal pain, Ostovertebral angle tenderness, Fever, Chills, Headache, Vomiting, Bacteruria.

Severe cases of pyelonephritis leads to sepsis which increases heart rate, rapid breathing and decreased BP (occasionally leading to septic shock).

Investigation

Ultrasound and Voiding cystourethrography.

Treatment

Dosage of Antibiotics

Links

Related Articles

Bibliography

References

KUMAR, – CLARK,. *Clinical Medicine*. 8. edition. 2012. ISBN 9780702044991.