

Incisura scapulae

The **incisura scapulae** is a notch in the **margo superior** scapula. In addition to the anatomical designation of the **scapula** part, it is also a **topographic formation**.

Border

- cranially: *ligamentum transversum scapulae superius*;
- caudally: *incisura scapulae*.

Structure

N. suprascapularis runs **below** the *ligamentum transversum scapulae*.

The *arteries and vena suprascapularia* run above the *ligamentum transversum scapulae*.

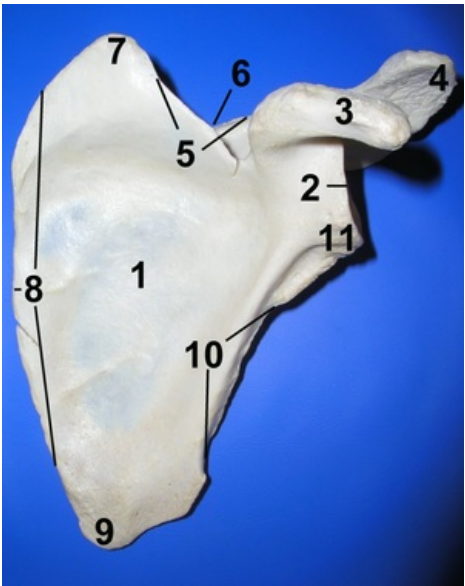
Links

Related articles

- Rarer entrapment neuropathies
- Scapula

Literature

- GRIM, Miloš – DRUGA, Rastislav. *Základy anatomie : 5. Anatomie krajín těla*. 1. edition. Praha : Galén, 2008. 119 pp. ISBN 978-80-7262-179-8.



Incisura scapulae

Cranial border	Lig. Transversum scapulae superius
Caudal border	incisura scapulae
Content	n. suprascapularis- pod lig. Transversum scapulae, vasa suprascapularia- nad lig. Transverse scapulae