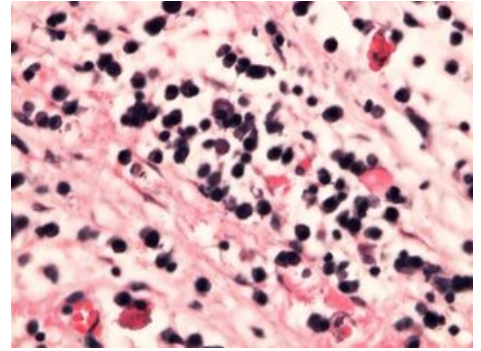


Hyaline petrification

Intracellular occurrence of hyaline in the form of deposits or droplets, examples:

- **Mallory hyalin** – cytokeratin coiled into a ball in the cytoplasm of hepatocytes in alcoholic cirrhosis
- **Councilman's bodies** – apoptotic bodies in hepatocytes in hepatitis , tend to be inside the ER (as well as inclusions of α 1 -antitrypsin deficiency).
- **Crooke's cells** – non-cancerous cells in the vicinity of a pituitary adenoma producing ACTH (thus causing Cushing's disease). They contain spirally coiled cytokeratins in the cytoplasm.
- **Russell bodies** – inclusions in the cytoplasm of plasma cells during chronic inflammation (correspond to Ig accumulated in GER). The cell acquires a silky appearance, when it ruptures, the hyaline gets into the extracellular space.
- **Trachoma bodies** – in the cytoplasm of the conjunctival epithelium during Chlamydia trachomatis infection , they contain glycogen.
- **Viral inclusions** - they are formed either by own viral inclusions or by proteins of cells damaged by the virus, they can be:
 - **intranuclear** – e.g. in keratinocytes in herpes infections;
 - **intracytoplasmic** – e.g. in ganglion cells in rabies (so-called **Negri bodies**).
- **Dystrophic changes of ganglion cells** – in degenerative brain diseases, e.g. **Lewy bodies** (spherical eosinophilic inclusions in the cytoplasm of ganglion cells, there is a clearing around them, they are larger than the nucleus).



Russell bodies

Links

Related Articles

- Disorders of the intercellular substance
- Collagen
- Mucopolysaccharides

Source

- PASTOR, Jan. *Langenbeck's medical web page* [online]. ©2006. [cit. 2011-10-22]. <<https://langenbeck.webs.com/>>.