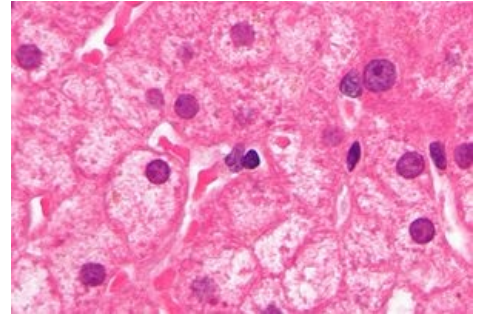


Hepatocyte

Hepatocytes make up about 80% of the cells in the liver.

- are large polyhedral **epithelial cells**, with large round centrally located nuclei (2 or more)
- grouped in interconnected plates that are arranged into thousand of small polyhedral lobules
- store glucose in the form of glycogen , also vitamin B12, folic acid and iron
- participate in the turnover and transport of lipids.
- synthesize some of the plasma proteins (albumin, α and β globulins, prothrombin, fibrinogen
- metabolize/detoxify fat
- participate in the turnover of steroid hormones.
- regulates cholesterol level
- secrete bile (up to 1 liter per day)



hepatocyte in HE

Links

Related Articles

- Liver
- cells of the liver

External links

- liver in wikipedia (<http://en.wikipedia.org/wiki/Liver>)

Bibliography

- book

References