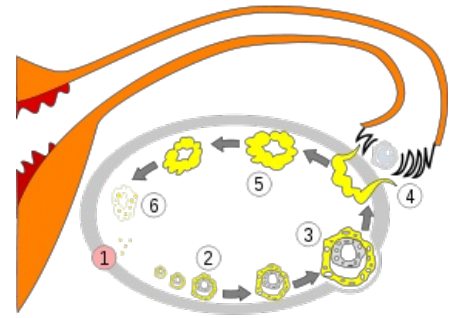


# Graafian follicle

This article has been translated from WikiSkripta; ready for the **editor's review**.

The term **Graaf follicle** (vesicular follicle) refers to a *mature ovarian follicle* in the final stage of development following ovulation. Sometimes, however, this name refers purely to the preovulatory phase, a few hours *before* ovulation.

It is formed by an **oocyte** (about 130 µm in diameter) and surrounding **supporting** (follicular or granulosa) **cells**. It has a spherical shape, in which there is an enlargement of the cavity (**antra**), which is filled with a **fluid**, between the follicular cells. The oocyte is located at the edge of this internal cavity, it is surrounded on all sides by an island of follicular cells - these cells therefore form the so-called **cumulus oophorus**. Surrounding the oocyte is an amorphous envelope, the **zona pellucida**.



Scheme of oocyte development. 1. immature oocyte, 2. maturing oocyte, 3. mature Graafian oocyte, 4. ovulation, 5. corpus luteum, 6. degeneration of corpus luteum

## Related Articles

- Ovary
- Menstrual cycle
- FSH
- LH
- Progestogens
- Estrogens

## References

- JUNQUIERA, L.Carlos – CARNEIRO, Jose – KELLEY, Robert O, et al. *Fundamentals of Histology*. 1. edition. Jinocany : H & H, 1997. 502 pp. ISBN 80-85787-37-7.
- BENEŠ, George. *Study Materials* [online]. [cit. 2009]. <<http://jirben.wz.cz>>.