

Glomerulopathy

Glomerulopathy is a term denoting a kidney disease with a predominant involvement of glomeruli. Damage to the glomeruli can occur due to various factors - vascular, hereditary, metabolic or immune.^[1]

Links

Related Articles

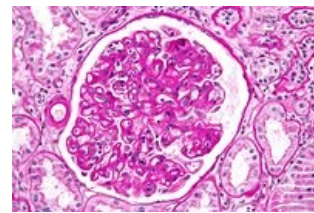
- Glomerulonephritis: Acute glomerulonephritis • Rapidly progressive glomerulonephritis • Chronic glomerulonephritis
- Functional kidney morphology
- Glomerulopathy manifested by nephrotic syndrome

References

- BUREŠ, Jan – HORÁČEK, Jiří – MALÝ, Jaroslav. *Vnitřní lékařství*. 2. edition. Galén, 2014. ISBN 978-80-7492-145-2.

References

1. JAN BUREŠ ET AL. *Vnitřní lékařství*. druhé. Galen, 2014. ISBN 978-80-7492-145-2.



Histology of glomerulopathy of autoimmune etiology in a transplanted kidney