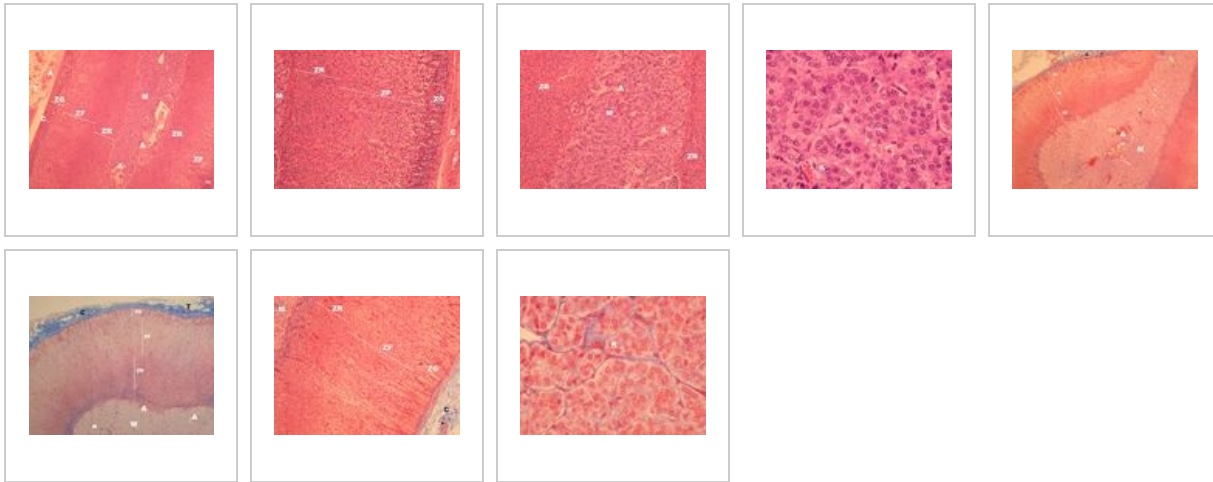
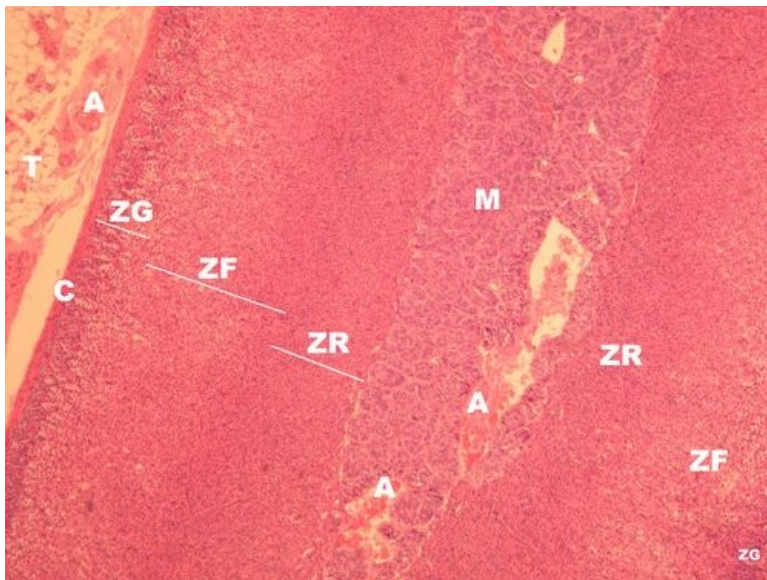


Glandula suprarenalis (SFLT)

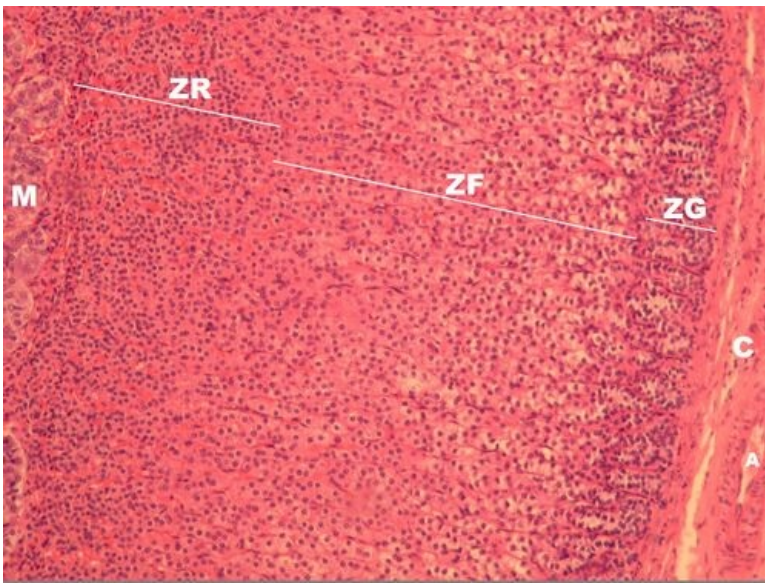


Adrenal gland - overview (HE staining)



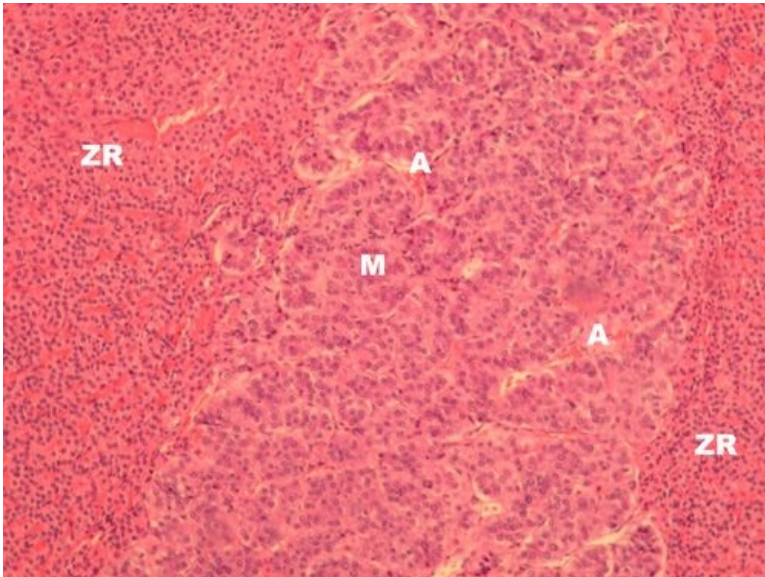
Description: C - capsula (adrenal capsule), T - the adrenal gland is surrounded by tissue with a significant fat content adrenal cortex: ZG - zona glomerulosa, ZF - zona fasciculata, ZR - zona reticularis, M - medulla (adrenal medulla), A - vessels.

Adrenal glands - overview of cortical layers (HE staining)



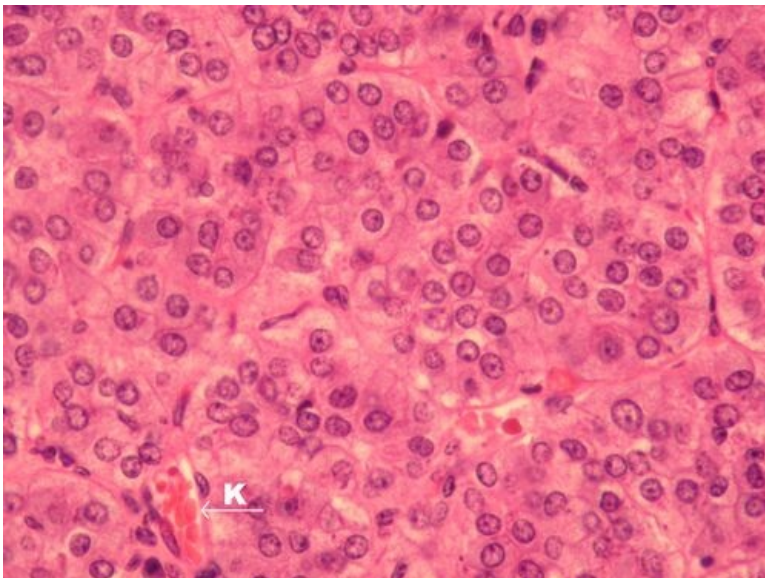
Description: C – capsula (adrenal gland capsula) adrenal cortex: ZG – zona glomerulosa, ZF – zona fasciculata, ZR – zona reticularis, M – medulla (adrenal medulla), A – vessels.

Adrenal gland – medulla (HE staining)



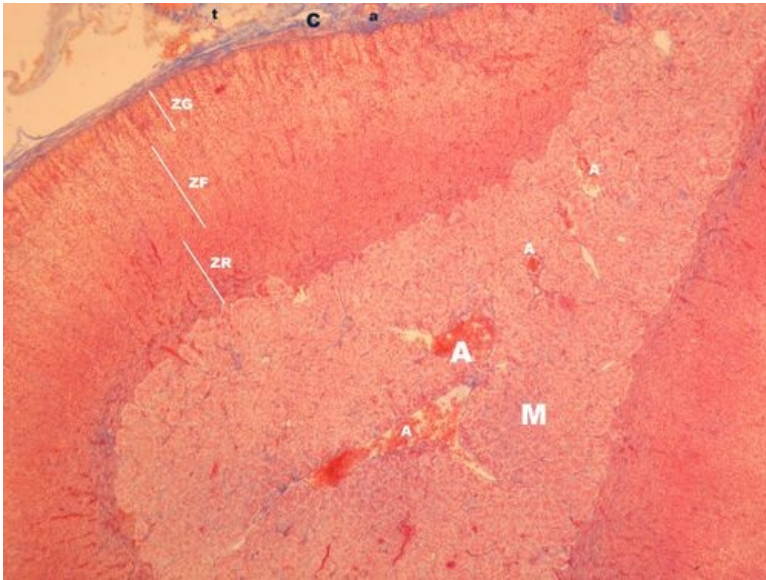
Description: M – medulla (adrenal medulla), ZR – zona reticularis of cortex, A – vessels.

Adrenal glands - medulla detail (HE staining)



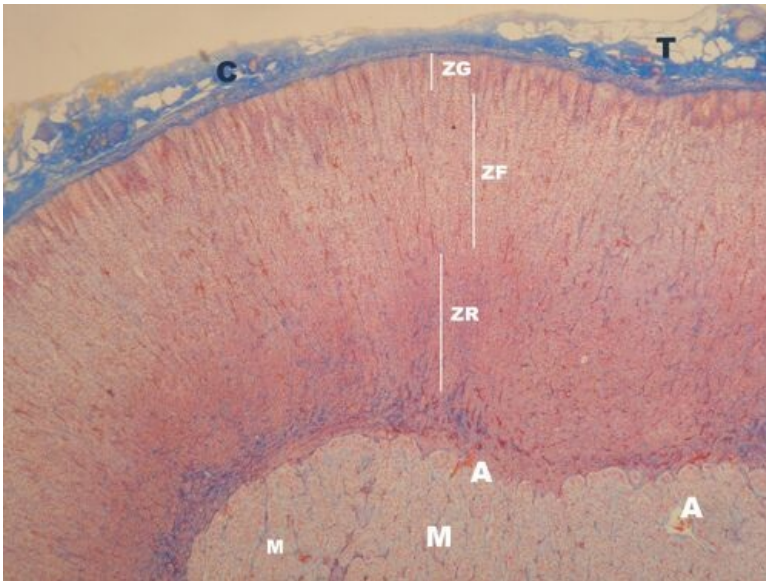
Description: K – capillary.

Adrenal gland - overview (AZAN staining)



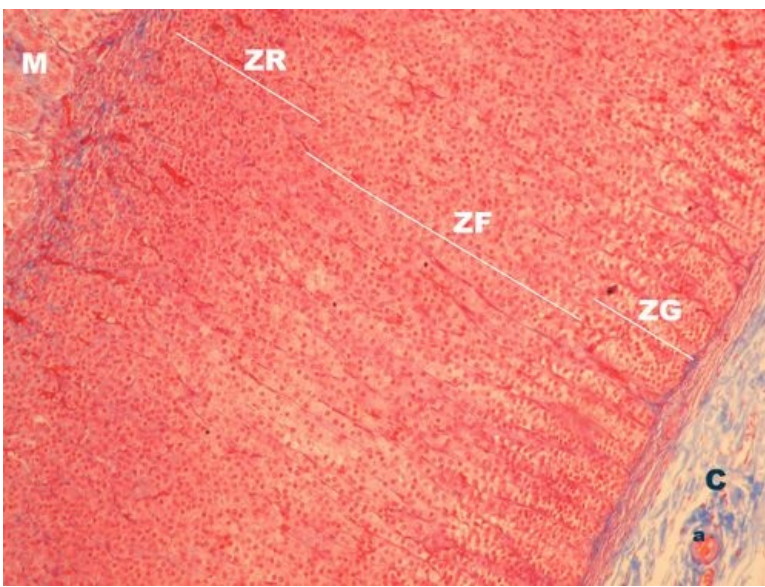
Description: C - capsula (adrenal gland capsula), a - vessels of the cortex, t - the adrenal gland is surrounded by tissue with a significant fat content, adrenal cortex: ZG - zona glomerulosa, ZF - zona fasciculata, ZR - zona reticularis, M - medulla (adrenal medulla), A - vessels of the medulla.

Adrenal glands - overview of the layers of the cortex (AZAN staining)



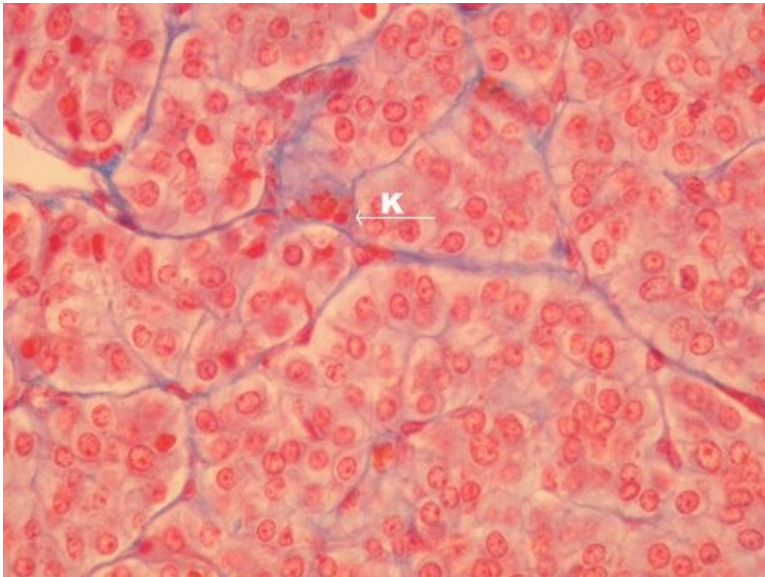
Description: C - capsula (adrenal capsula), T - fat cells, adrenal cortex: ZG - zona glomerulosa, ZF - zona fasciculata, ZR - zona reticularis, M - medulla (adrenal medulla), A - vessels of medulla.

Adrenal glands - overview of the layers of the cortex (AZAN staining)



Description: C – capsula (adrenal capsula), a – vessels of cortex, adrenal cortex: ZG – zona glomerulosa, ZF – zona fasciculata, ZR – zona reticularis, M – medulla (adrenal medulla).

Adrenal gland - medulla detail (AZAN staining)



Description: K – capillary, ligament blue-

Endocrine system

- Hypophysis (SFLT)
- Glandula thyroidea (SFLT)
- Glandula parathyroidea (SFLT)
- Glandula suprarenalis (SFLT)
- Pancreas (SFLT)

Links

- Histology Atlas (3rd faculty)