

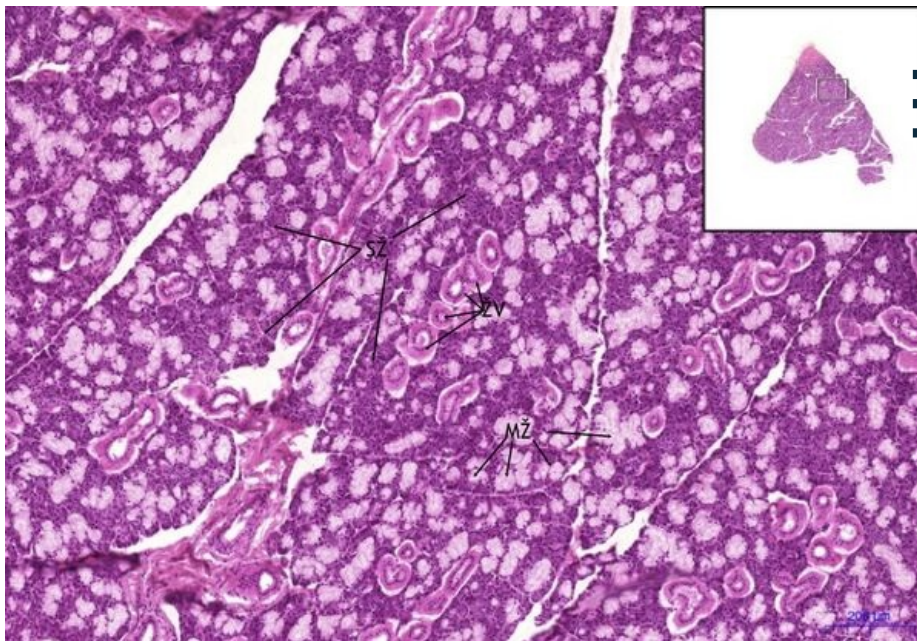
# Glandula sublingualis - HE

## Glandula sublingualis, HE 0,7x

Glandula sublingualis:



## Glandula sublingualis, HE 5x



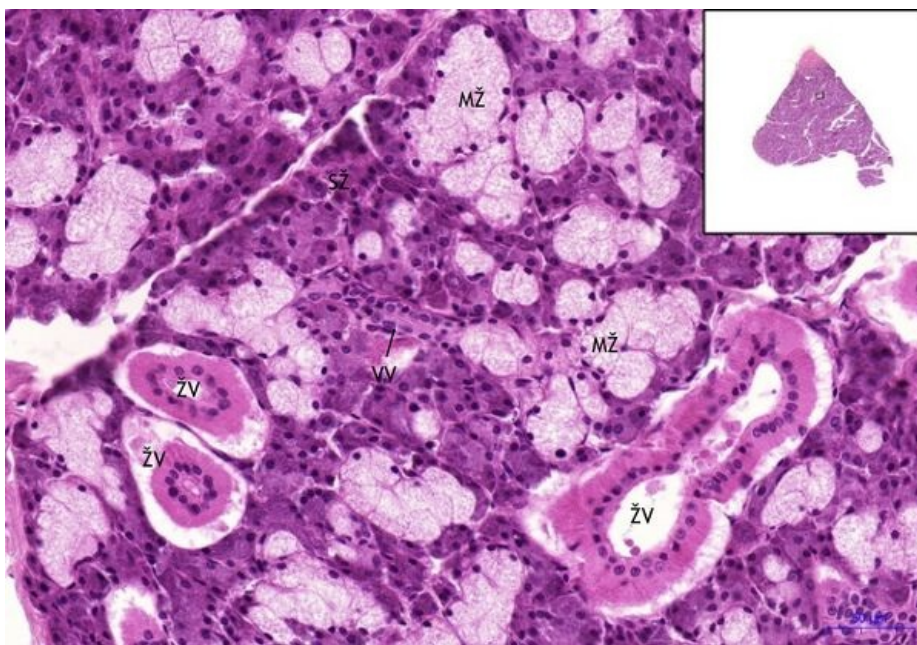
Glandula sublingualis:

- 1) SŽ - serous gland
- 2) MŽ - mucinous gland
- 3) intralobular duct

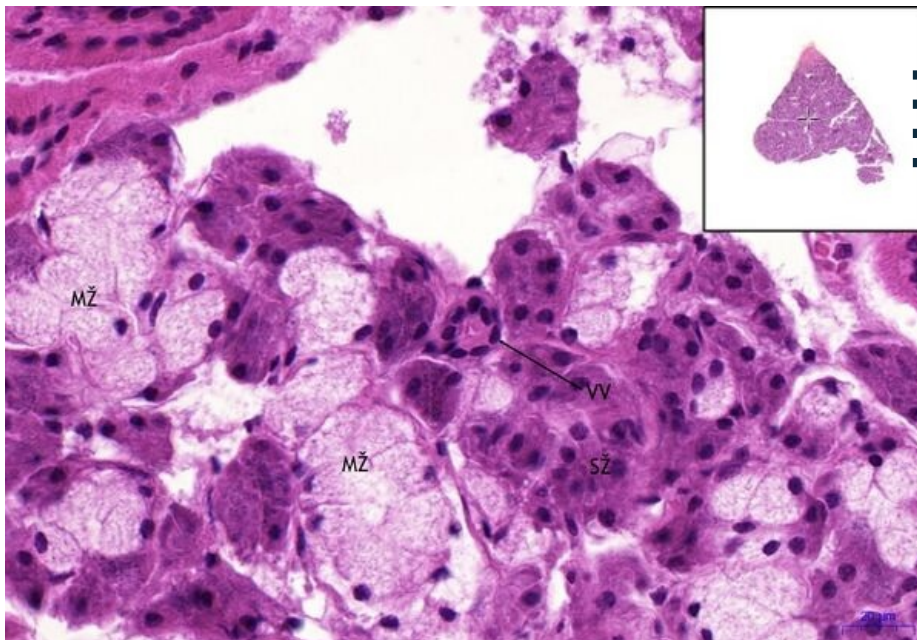
## Glandula sublingualis, HE 20x

Glandula sublingualis:

- 1) SŽ - serous gland
- 2) MŽ - mucinous gland
- 3) intralobular duct
- a) ŽV - striated duct
- b) VV - inserted outlet



## Glandula sublingualis, HE 40x



### Glandula sublingualis:

- 1) SŽ - serous gland
- 2) MŽ - mucinous gland
- 3) intralobular duct
- a) VV - inserted outlet

## Navigation

### Navigation: Digestive tract

← Slide Z7 | List of the slides | Slide Z9 →