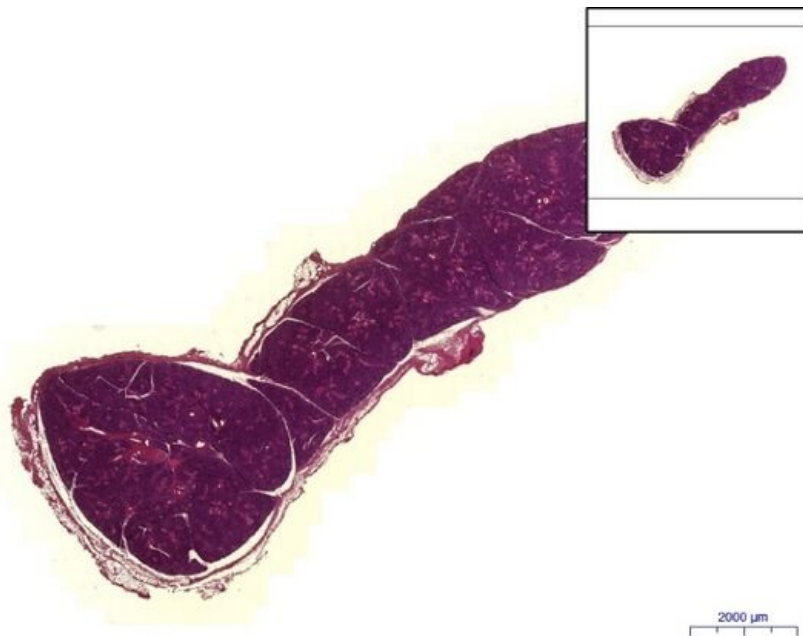


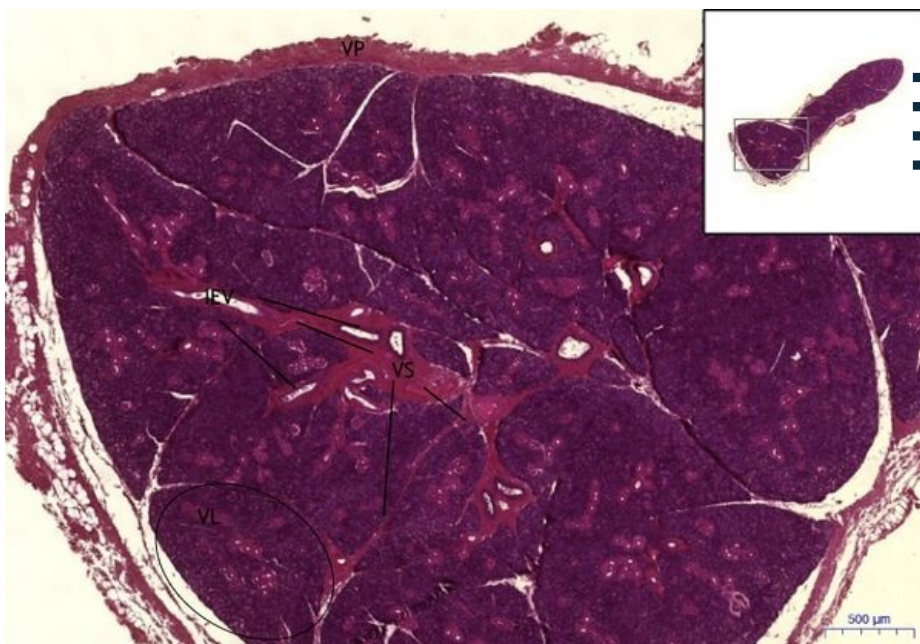
# Glandula parotis - HE

## Glandula parotis / Parotid gland, HE 0,6x



Glandula parotis

## Glandula parotis / Parotid gland, HE 2x



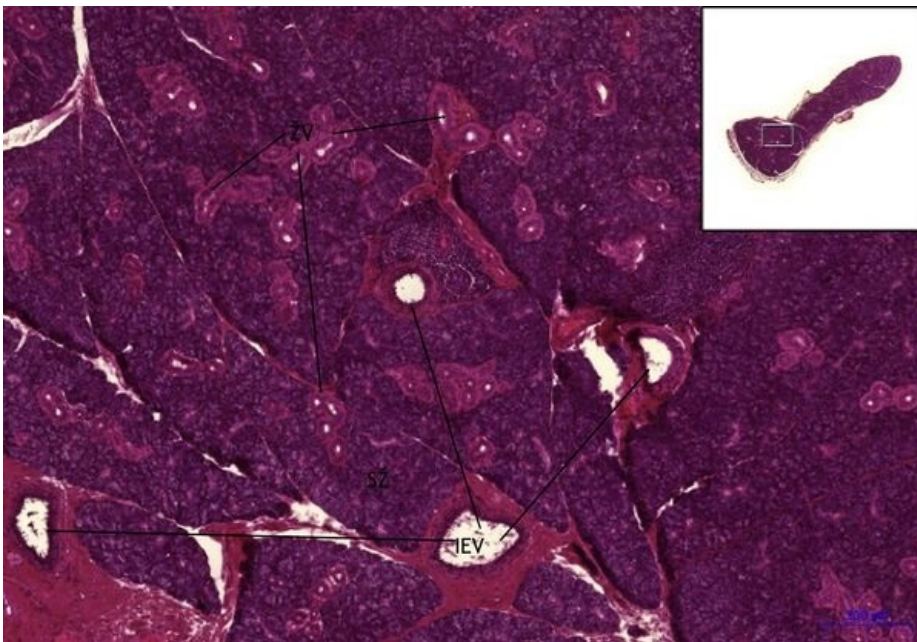
Glandula parotis:

- 1) VP – fibrous capsule
- 2) VL – fibrous lobule
- 3) VS – fibrous septa
- 4) IEV – interlobular duct

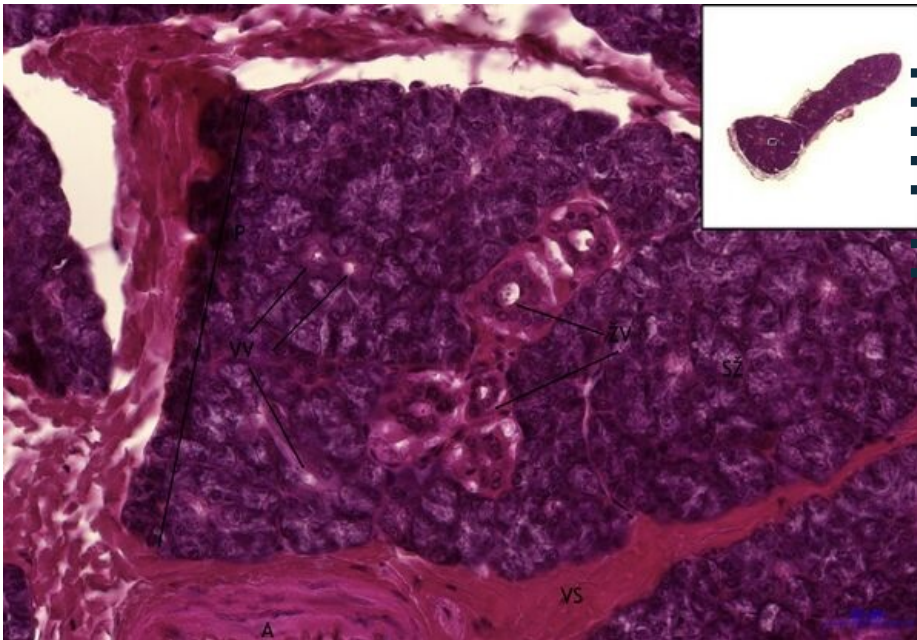
## Glandula parotis / Parotid gland, HE 5x

Glandula parotis:

- 1) – intralobular duct
- a) ŽV – striated duct
- 2) IEV – interlobular duct



## Glandula parotis / Parotid gland, HE 20x



### Glandula parotis:

- 1) P – parenchyma
- 2) SŽ – serous gland
- 3) – intralobular duct
- a) ŽV – striated duct
- b) VV – intercalated duct
- 4) IS – interlobular septum
- 5) A – artery

## Navigation

### Navigation: Epithelial tissue

← Slide 12 | List of the slides | Slide 14 →

### Navigation: Digestive tract

← Slide Z6 | List of the slides | Slide Z8 →