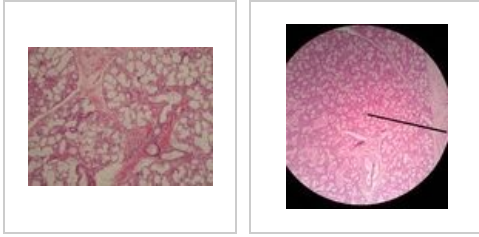
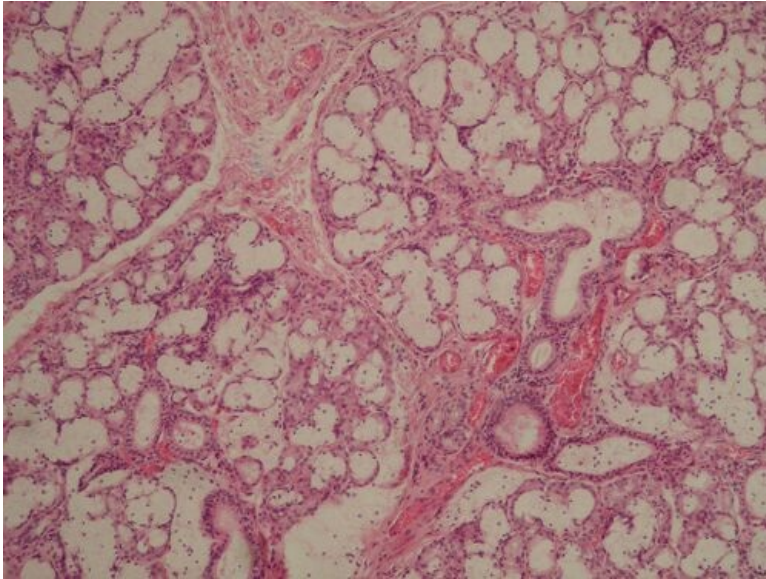


Gl. submandibularis (SFLT)



Glandula submandibularis - HE stain



Description: Glandula submandibularis is a mixed, seromucinous, tuboacinosous gland. The glandular tissue begins with a serous acinus and continues with a mucinous tubulus. Mucinous cells predominate in the glandula submandibularis. The annealed outlets are considerably reduced. The combination of acini at the end of the tubule is referred to as serous lunules.

Glandula submandibularis



Description: Clear enlargement — glandula submandibularis. The proportion of serous and mucinous cells in the tissue is approximately 50:50.

Gastrointestinální trakt

- Dorsum of the tongue (SFLT)
- Tongue - radix (SFLT)
- Tongue - tonsilla lingualis (SFLT)
- Gl. submandibularis (SFLT)
- Gl. parotis (SFLT)
- Gl. sublingualis (SFLT)
- Esophagus (SFLT)
- Gaster - cardia (SFLT)
- Gaster - fundus (SFLT)
- Pylorus - duodenum (SFLT)
- Duodenum (SFLT)
- Small intestine (SFLT)
- Colon (SFLT)
- Appendix (SFLT)
- Liver (SFLT)
- Gallbladder (SFLT)
- Pancreas (SFLT)

Links

- Histology Atlas (3rd faculty)

