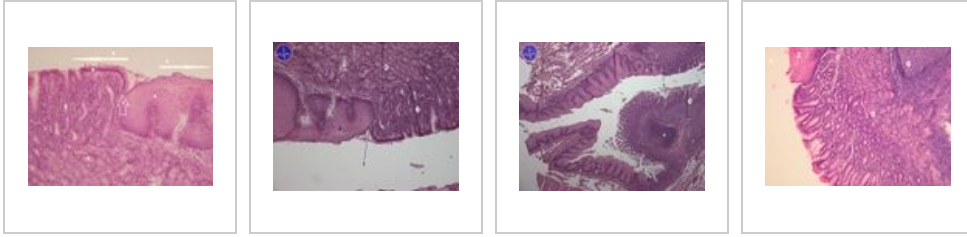
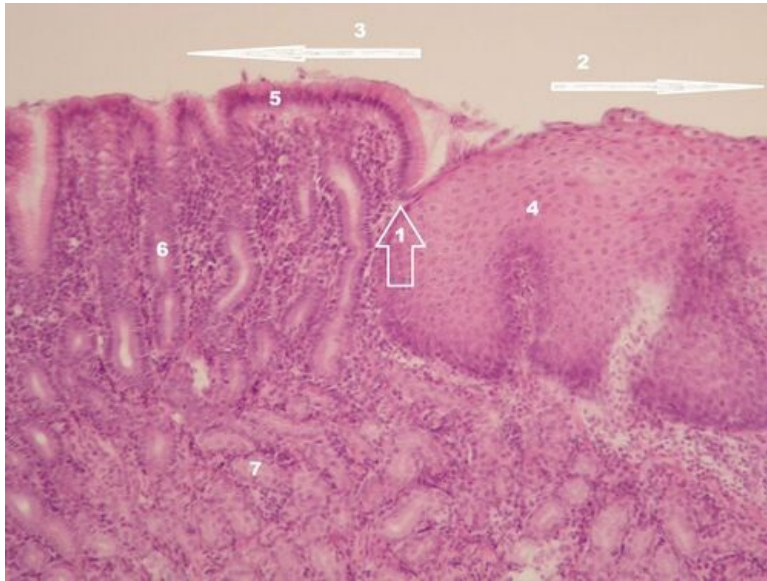


Gaster - cardia (SFLT)



Cardia - HE stain



Description: 1 - epithelial transition, 2 - esophagus, 3 - stomach, 4 - multi-layered squamous epithelium of the non-horny esophagus, 5 - tall cylindrical epithelium of the stomach, 6 - mucinous glandulae cardiacae, 7 - mucinous glandulae cardiacae on a cross section.

Cardia - HE stain



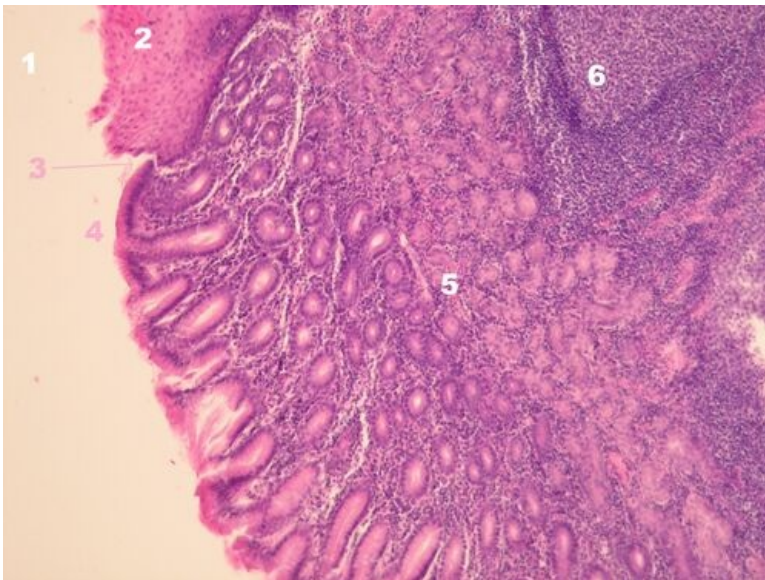
Description: 1. epithelial transition, 2. multi-layered squamous non-keratinized epithelium of the esophagus, 3. glands of the cardia, 4. glands of the cardia on a cross section.

Cardia - HE stain



Description: 1. epithelial transition, 2. multi-layered squamous non-keratinized epithelium of the esophagus, 3 - mucous membrane of the stomach, 4 - lymphatic follicle.

Cardia, HE stain - detail of the transition



Description: 1 - lumen, 2 - multi-layered squamous non-keratinized epithelium of the esophagus, 3 - epithelial transition, 4 - tall cylindrical epithelium of the stomach, 5 - mucinous glandulae cardiacaе, 6 - lymphatic follicle.

Gastrointestinal tract

- Dorsum of tongue (SFLT)
- Tongue - radix (SFLT)
- Tongue - tonsilla lingualis (SFLT)
- Gl. submandibularis (SFLT)
- Gl. parotis (SFLT)
- Gl. sublingualis (SFLT)
- Esophagus (SFLT)
- Gaster - cardia (SFLT)
- Gaster - fundus (SFLT)
- Pylorus - duodenum (SFLT)
- Duodenum (SFLT)
- Small intestine (SFLT)

- Colon (SFLT)
- Appendix (SFLT)
- Liver (SFLT)
- Gallbladder (SFLT)
- Pancreas (SFLT)

Links

- Histology Atlas (3rd faculty)