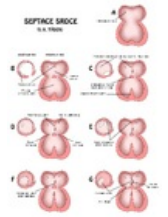


# Foramen ovale patens

'*Foramen ovale patens*' (*foramen ovale apertum*) is a hole in the atrial septum that persists postnatally. Usually, the '*foramen ovale*' closes and merges with the septum to one year of age by the fusion of the developmentally present valves. "Up to a quarter of healthy adults" have a mild form of the defect. . The problem occurs with increased pressure in the right atrium and with more pronounced Heart defects, such as the permanently open foramen ovale patens. In these cases, undesirable "short-circuit manifestations" and possible paradoxical embolism occur.



## Links

### Related Articles

- Heart
- Embryonic septation of the heart
- Amplatzer's occluder
- Congenital heart defects

### References

- VOKURKA, Martin, et al. *Great medical dictionary*. 7th edition. Prague: Maxdorf, 2007. ISBN 978-80-7345-130-1