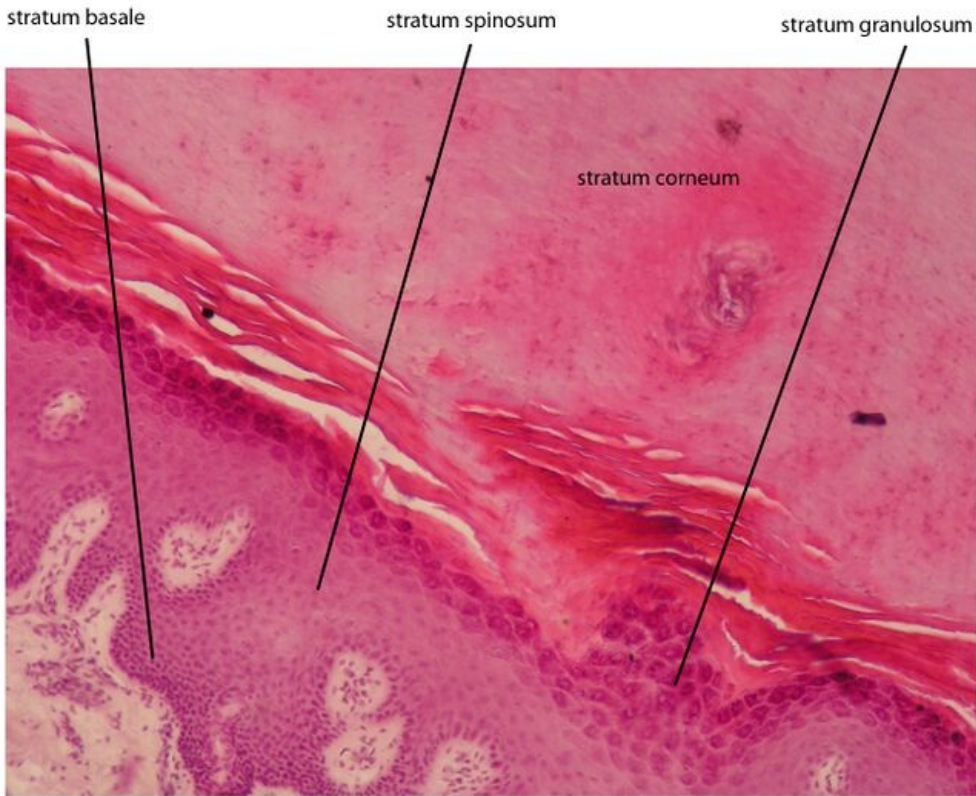


File:Vrstevnatý dlaždicový rohovějící epitel-detail.jpg



Vrstevnatý dlaždicový rohovějící epitel - kůže silného typu - preparát planta pedis, barveno H&E

Size of this preview: 744 × 599 pixels.

Original file (3,046 × 2,454 pixels, file size: 848 KB, MIME type: image/jpeg)

I have downloaded the same photo from wikicripta. couldnt fix the format so had to do it manually.

File history

Click on a date/time to view the file as it appeared at that time.

	Date/Time	Thumbnail	Dimensions	User	Comment
current	10:29, 21 February 2022		3,046 × 2,454 (848 KB)	LotusTannish (talk contribs)	

You cannot overwrite this file.

File usage

The following page uses this file:

- Epithelial tumors

Metadata

This file contains additional information, probably added from the digital camera or scanner used to create or digitize it.

If the file has been modified from its original state, some details may not fully reflect the modified file.

Image title	OLYMPUS DIGITAL
-------------	-----------------

	CAMERA
Camera manufacturer	OLYMPUS CORPORATION
Camera model	C5060WZ
Exposure time	1/160 sec (0.00625)
F Number	f/4.5
ISO speed rating	100
Date and time of data generation	Unknown date
Lens focal length	19.8 mm