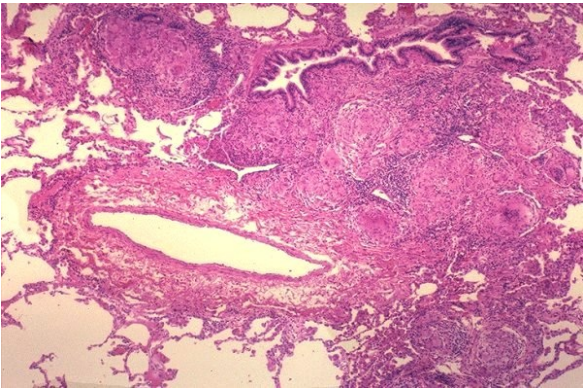


File:Sarcoid lunginv18.jpg



No higher resolution available.

Sarcoid_lunginv18.jpg (600 × 396 pixels, file size: 97 KB, MIME type: image/jpeg)

Summary

Description
Granulomas adjacent to bronchiole and pulmonary artery

Author
Yale Rosen, M.D.

Source
http://granuloma.homestead.com/sarcoid_lung_microscopic.htmlhttp://granuloma.homestead.com/sarcoid_lung_microscopic.html

Date
2012-06-01

File history

Click on a date/time to view the file as it appeared at that time.

	Date/Time	Thumbnail	Dimensions	User	Comment
current	19:28, 12 May 2023		600 × 396 (97 KB)	Annavotrubova (talk contribs)	{{File description = Granulomas adjacent to bronchiole and pulmonary artery author = Yale Rosen, M.D. source = http://granuloma.homestead.com/sarcoid_lung_microscopic.html date = 2012-06-01 }}

You cannot overwrite this file.

File usage

The following page uses this file:

- Sarcoidosis (pathology)