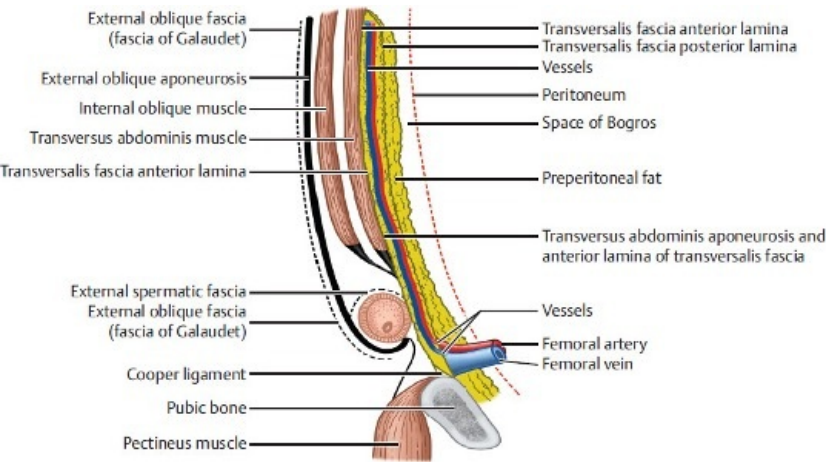


File:Sagittal cross section lower abdominal wall.jpg



No higher resolution available.

Sagittal_cross_section_lower_abdominal_wall.jpg (537 × 297 pixels, file size: 50 KB, MIME type: image/jpeg)

Summary

Description

1.41Sagittal cross section of the lower abdominal wall at the inguinal region showing anatomic layers at the level of inguinal canal. 1, external oblique fascia (fascia of Gallaudet); 2, external oblique aponeurosis; 3, internal oblique muscle; 4, transversus abdominis muscle; 5, transversalis fascia anterior; 6, external spermatic fascia; 7, Cooper’s ligament; 8, pubic bone; 9, pectineus muscle; 10, transversalis fascia; 11, transversalis fascia posterior lamina; 12, vessels; 13, peritoneum; 14, space of Bogros; 15, preperitoneal fat; 16, transversus abdominis aponeurosis and anterior lamina of transversalis fascia; 17, femoral artery; and 18, femoral vein.

Author

Modified from Skandalakis et al.68

Source

: Tissue Layers of the Inguinal Canal Region. In: Saremi F, Sánchez-Quintana D, Kiyosue H, Patel D, Law M, Tubbs R, ed. Imaging Anatomy: Text and Atlas Volume 2 Abdomen and Pelvis. 1st Edition. New York: Thieme; 2022

Date

27.03.2024

File history

Click on a date/time to view the file as it appeared at that time.

	Date/Time	Thumbnail	Dimensions	User	Comment
current	20:06, 27 March 2024		537 × 297 (50 KB)	Shaked.Fru (talk contribs)	{{File description = 1.41Sagittal cross section of the lower abdominal wall at the inguinal region showing anatomic layers at the level of inguinal canal. 1, external oblique fascia (fascia of Gallaudet); 2, external oblique aponeurosis; 3, internal oblique muscle; 4, transversus abdominis muscle; 5, transversalis fascia anterior; 6, external spermatic fascia; 7, Cooper’s ligament; 8, pubic bone; 9, pectineus muscle; 10, transversalis fascia; 11, transversalis fascia posterior lamina; 12, ve...

You cannot overwrite this file.

File usage

The following page uses this file:

- Abdominal wall - Function, Muscles, fascias

Metadata

This file contains additional information, probably added from the digital camera or scanner used to create or digitize it.

If the file has been modified from its original state, some details may not fully reflect the modified file.