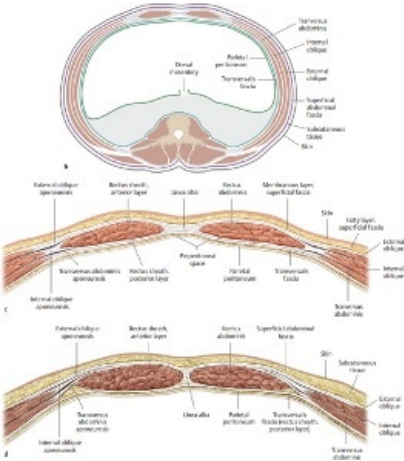


# File:Rectus sheath.jpg



No higher resolution available.

Rectus\_sheath.jpg (263 × 297 pixels, file size: 27 KB, MIME type: image/jpeg)

## Summary

### Description

Relationship between rectus sheath and the parietal peritoneum and transversalis fascia. Section through the abdominal wall superior to the arcuate line. Section through the abdominal wall inferior to the arcuate line.

### Author

Schuenke M, Schulte E, Schumacher U. THIEME Atlas of Anatomy. General Anatomy and Musculoskeletal System. Illustrations by Voll M and Wesker K. 3rd ed. New York: Thieme Medical Publishers; 2020.

### Source

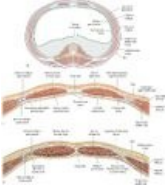
: 3.2.2 Rectus Sheath. In: Wikenheiser J, Voll M, Wesker K, ed. Clinical Anatomy, Histology, Embryology, and Neuroanatomy: An Integrated Textbook. 1st Edition. New York: Thieme; 2022.

### Date

27.03.2024

## File history

Click on a date/time to view the file as it appeared at that time.

|         | Date/Time            | Thumbnail   | Dimensions        | User                         | Comment  |
|---------|----------------------|---|-------------------|------------------------------|--|
| current | 20:01, 27 March 2024 |  | 263 × 297 (27 KB) | Shaked.Fru (talk   contribs) | {{File  description = Relationship between rectus sheath and the parietal peritoneum and transversalis fascia. Section through the abdominal wall superior to the arcuate line. Section through the abdominal wall inferior to the arcuate line.  author = Schuenke M, Schulte E, Schumacher U. THIEME Atlas of Anatomy. General Anatomy and Musculoskeletal System. Illustrations by Voll M and Wesker K. 3rd ed. New York: Thieme Medical Publishers; 2020.  source = : 3.2.2 Rectus Sheath. In: Wike... |

You cannot overwrite this file.

## File usage

The following page uses this file:

- Abdominal wall - Function, Muscles, fascias

## Metadata

This file contains additional information, probably added from the digital camera or scanner used to create or digitize it.

If the file has been modified from its original state, some details may not fully reflect the modified file.

