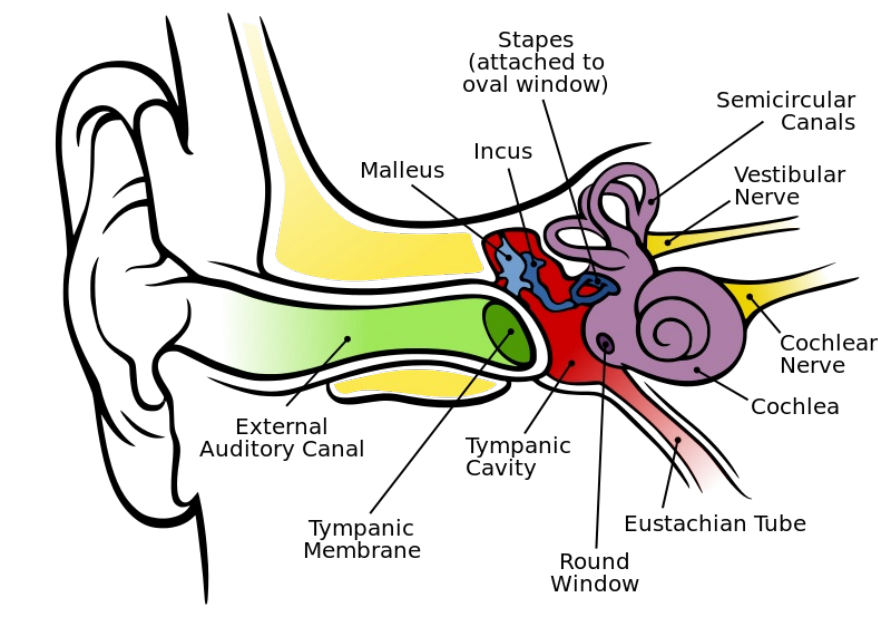


File:Parts of the ear.png



No higher resolution available.

Parts\_of\_the\_ear.png (800 × 600 pixels, file size: 109 KB, MIME type: image/png)

**Description**  
parts of the ear

**Author**  
Alexander Graham Bell Association for the Deaf and Hard of Hearing

**Source**  
[http://www.agbell.org/uploadedImages/Learn/What\\_is\\_hearing\\_loss/Anatomy\\_of\\_the\\_Human\\_Ear.png?n=4226](http://www.agbell.org/uploadedImages/Learn/What_is_hearing_loss/Anatomy_of_the_Human_Ear.png?n=4226)

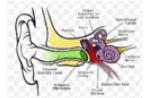
**Date**  
2015-12-06

Licensing

Public domain

File history

Click on a date/time to view the file as it appeared at that time.

	Date/Time	Thumbnail	Dimensions	User	Comment
current	16:34, 6 December 2015		800 × 600 (109 KB)	Annabelle Hampf (talk   contribs)	{ {File  description = parts of the ear  source = <a href="http://www.agbell.org/uploadedImages/Learn/What_is_hearing_loss/Anatomy_of_the_Human_Ear.png?n=4226">http://www.agbell.org/uploadedImages/Learn/What_is_hearing_loss/Anatomy_of_the_Human_Ear.png?n=4226</a>  date = 2015-12-06  author = Alexander Graham Bell Association for the Deaf and Hard of Hearing  licens...

You cannot overwrite this file.

File usage

The following page uses this file:

- Stress-activated channels