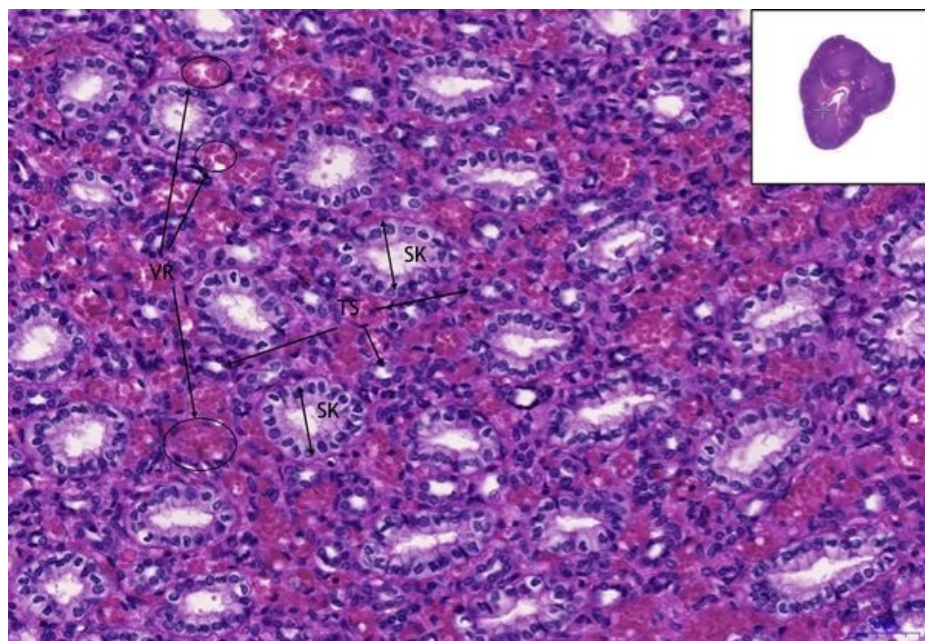


File:Kidney, HE 20x.jpeg



No higher resolution available.

Kidney,_HE_20x.jpeg (600 × 414 pixels, file size: 81 KB, MIME type: image/jpeg)

Open in Media Viewer

Summary

Description

Kidney, HE 20x

Author

Department of Histology and Embryology, 3rd Faculty of Medicine, Charles University

Source

https://www.wikiskripta.eu/w/Soubor:Ledvina-Kidney,_HE_20x.jpeg

Date

2018-11-18

Licensing

Creative Commons Attribution-NonCommercial-NoDerivs 3.0 Czech Republic (<http://creativecommons.org/licenses/by-nc-nd/3.0/cz/deed.en>)

File history

Click on a date/time to view the file as it appeared at that time.

	Date/Time	Thumbnail	Dimensions	User	Comment
current	00:28, 13 April 2023		600 × 414 (81 KB)	Badr (talk contribs)	{{File description = Write a description here author = Author's name and surname source = Source web address or "own work" date = Date }}

You cannot overwrite this file.

File usage

The following page uses this file:

- Kidney - HE

Metadata

This file contains additional information, probably added from the digital camera or scanner used to create or digitize it.

If the file has been modified from its original state, some details may not fully reflect the modified file.