

File:Image 1.png

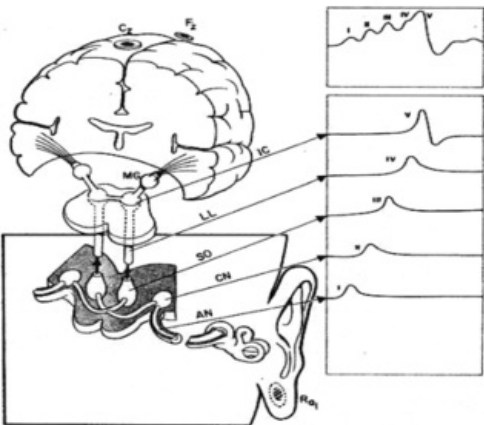


Figure 93. Auditory evoked response studies. AN = auditory nerves; CN = cochlear nuclei; SO = superior olives; LL = lateral lemnisci; IC = inferior colliculi; MG = medial geniculates.

Fig. 2. Anatomical-electrophysiological correlation of BAEP (Poon's, 2003b).

No higher resolution available.

Image_1.png (552 × 364 pixels, file size: 87 KB, MIME type: image/png)

Open in Media Viewer

Audio Stimulated Electrical Waves & Associated Regions

File history

Click on a date/time to view the file as it appeared at that time.

	Date/Time	Thumbnail	Dimensions	User	Comment
current	23:27, 26 December 2018		552 × 364 (87 KB)	Group3ABC (talk contribs)	Audio Stimulated Electrical Waves & Associated Regions

You cannot overwrite this file.

File usage

The following file is a duplicate of this file (more details):

- File:Image1.png

The following page uses this file:

- Forum:Seminar papers/Biophysics/2. LF/2018-2019/Group 3/ABC

Metadata

This file contains additional information, probably added from the digital camera or scanner used to create or digitize it.

If the file has been modified from its original state, some details may not fully reflect the modified file.