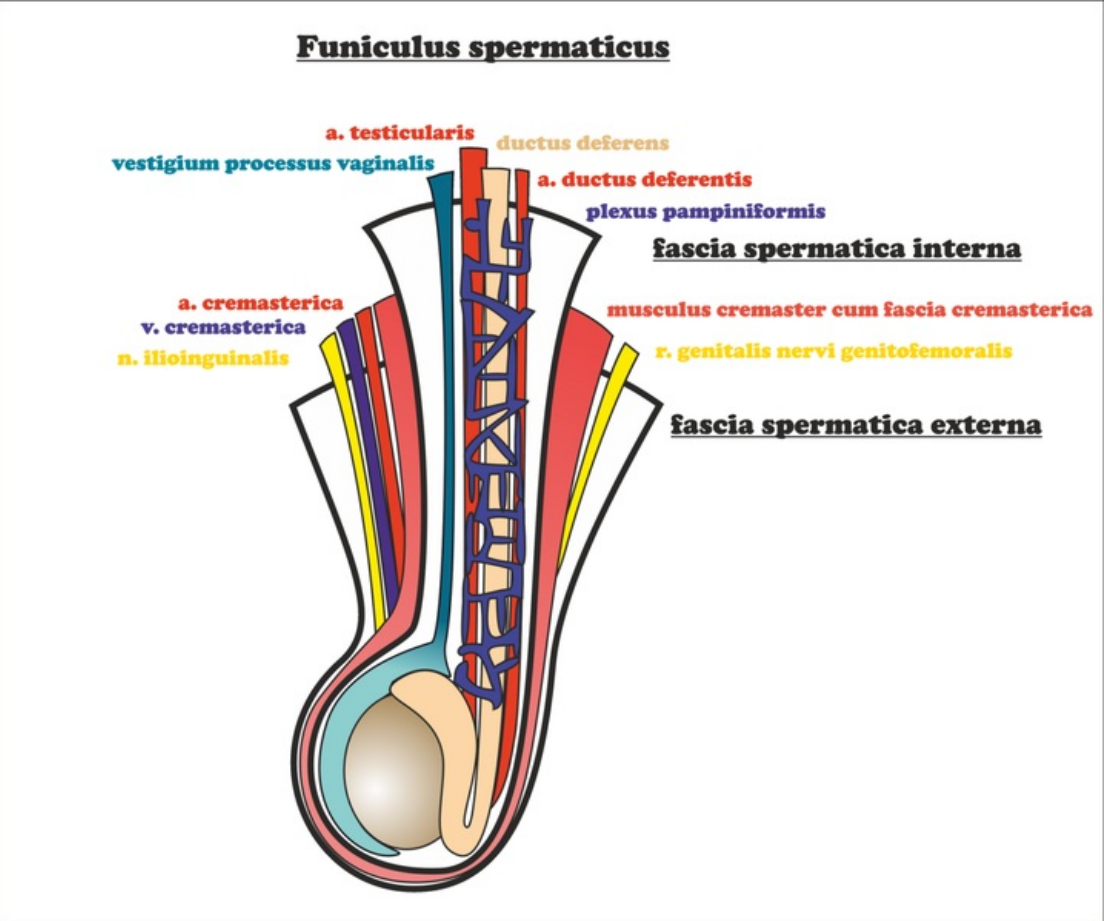


File:Funisperm.png



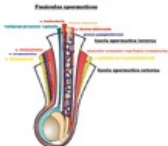
Size of this preview: 719 × 600 pixels.

Original file (1,024 × 854 pixels, file size: 286 KB, MIME type: image/png)

Structures of the funiculus spermaticus

File history

Click on a date/time to view the file as it appeared at that time.

	Date/Time	Thumbnail	Dimensions	User	Comment
current	16:52, 20 May 2023		1,024 × 854 (286 KB)	Jansasala (talk contribs)	

You cannot overwrite this file.

File usage

The following 2 pages use this file:

- Inguinal canal
- Spermatic cord

Metadata

This file contains additional information, probably added from the digital camera or scanner used to create or digitize it.

If the file has been modified from its original state, some details may not fully reflect the modified file.

