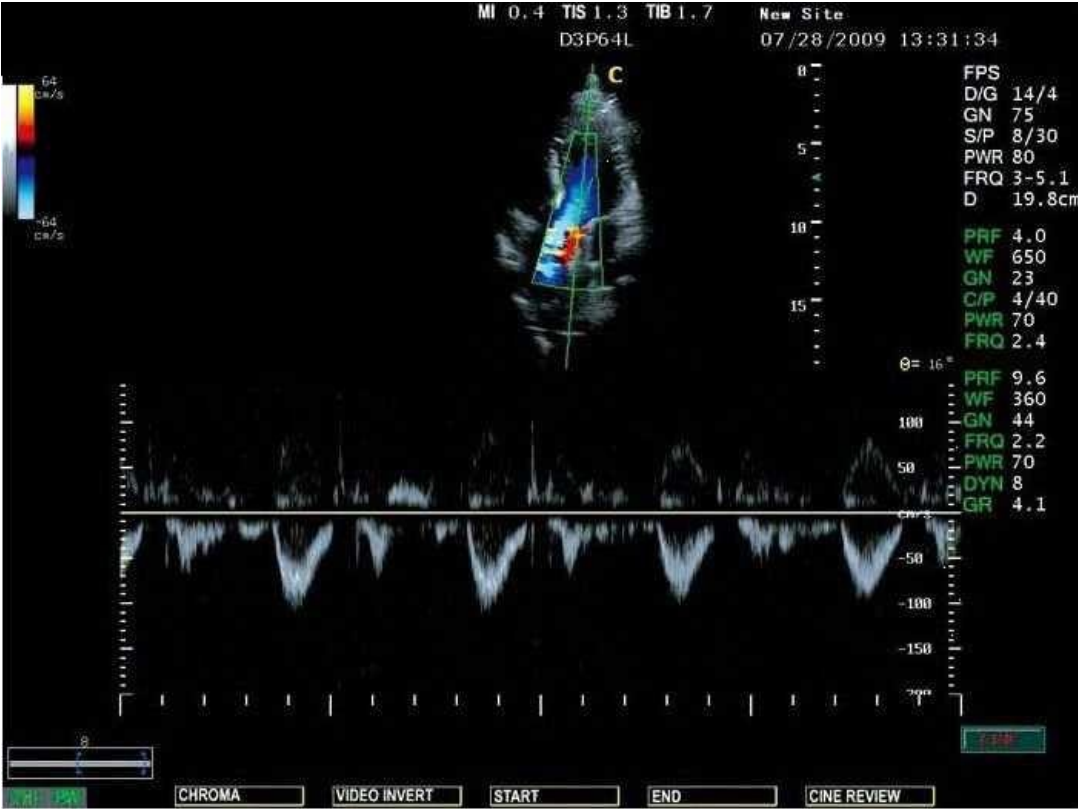


# File:Figure 14 - Image in Doppler mode.png



No higher resolution available.

Figure\_14\_-\_Image\_in\_Doppler\_mode.png (701 × 525 pixels, file size: 268 KB, MIME type: image/png)

Open in Media Viewer

## Description

afgewee

## Author

Erufaildon (talk)

## Source

Own work

## Date

## Licensing

Creative Commons Attribution-ShareAlike 3.0 Unported (<http://creativecommons.org/licenses/by-sa/3.0/deed.en>)

## File history

Click on a date/time to view the file as it appeared at that time.

	Date/Time	Thumbnail	Dimensions	User	Comment
current	22:37, 31 August 2015		701 × 525 (268 KB)	Erufaildon (talk   contribs)	<div><div><div><div><div><span></span></div><div><span></span></div></div><div><div><span></span></div><div><span></span></div></div><div><div><span></span></div><div><span></span></div></div></div><div><div><div><span></span></div><div><span></span></div></div><div><div><span></span></div><div><span></span></div></div></div><div><div><div><span></span></div><div><span></span></div></div><div><div><span></span></div><div><span></span></div></div></div><div><div><div><span></span></div><div><span></span></div></div><div><div><span></span></div><div><span></span></div></div></div></div><div><div><div><span></span></div><div><span></span></div></div><div><div><span></span></div><div><span></span></div></div></div><div><div><div><span></span></div><div><span></span></div></div><div><div><span></span></div><div><span></span></div></div></div></div> <div><div><div><span></span></div><div><span></span></div></div><div><div><span></span></div><div><span></span></div></div></div> <div><div><div><span></span></div><div><span></span></div></div><div><div><span></span></div><div><span></span></div></div></div>

- UTRASONOGRAPHY (SONO)

## Metadata

This file contains additional information, probably added from the digital camera or scanner used to create or digitize it.

If the file has been modified from its original state, some details may not fully reflect the modified file.