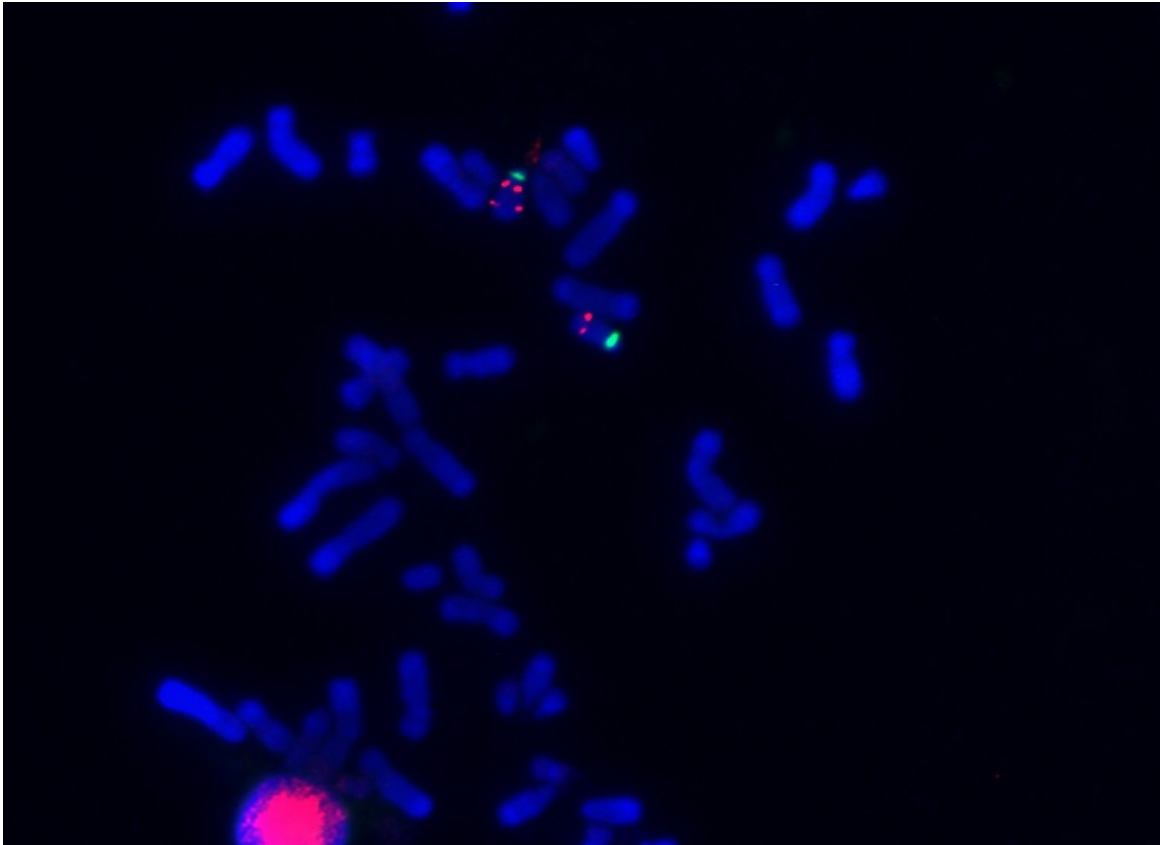


File:FISH locus specific probe patient.jpg



No higher resolution available.

FISH_locus_specific_probe_patient.jpg (752 × 548 pixels, file size: 90 KB, MIME type: image/jpeg)

Summary

- Description**

Write a description here
- Author**

Author's name and surname
- Source**

Source web address or "own work"
- Date**

Date

File history

Click on a date/time to view the file as it appeared at that time.

	Date/Time	Thumbnail	Dimensions	User	Comment
current	21:37, 4 January 2023		752 × 548 (90 KB)	Hisa (talk contribs)	{ {File description = Write a description here author = Author's name and surname source = Source web address or "own work" date = Date }}

You cannot overwrite this file.

File usage

The following 2 pages use this file:

- Identification of chromosomes
- In situ hybridization

Metadata

This file contains additional information, probably added from the digital camera or scanner used to create or digitize it.

If the file has been modified from its original state, some details may not fully reflect the modified file.