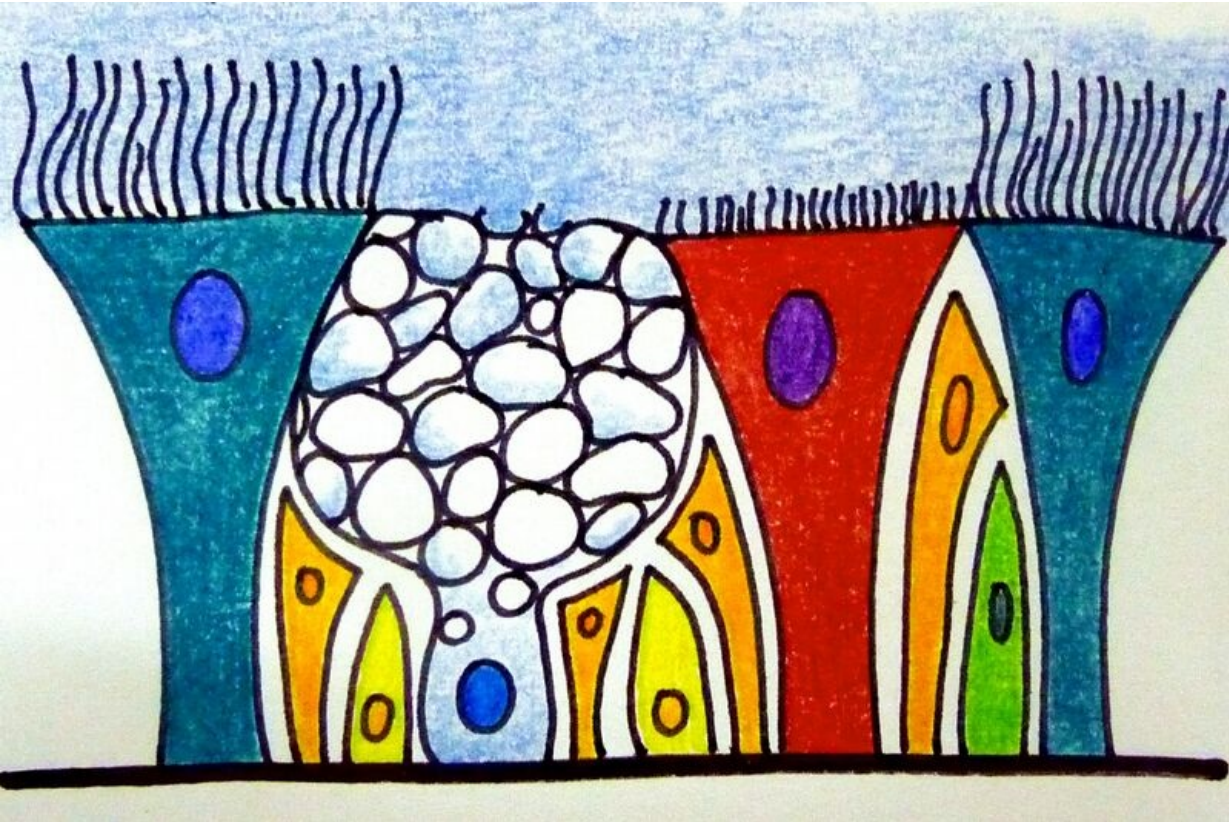


File:Epitel dýchacích cest.jpg




Size of this preview: 800 × 534 pixels.

Original file (2,116 × 1,413 pixels, file size: 1.23 MB, MIME type: image/jpeg)

respiratory epithelium

File history

Click on a date/time to view the file as it appeared at that time.

	Date/Time	Thumbnail	Dimensions	User	Comment
current	15:52, 10 February 2022		2,116 × 1,413 (1.23 MB)	Anupama Sunny (talk contribs)	

You cannot overwrite this file.

File usage

The following 2 pages use this file:

- Basal cells
- Bronchus Segmentalis (histological specimen)

Metadata

This file contains additional information, probably added from the digital camera or scanner used to create or digitize it.

If the file has been modified from its original state, some details may not fully reflect the modified file.

Camera manufacturer	Panasonic
Camera model	DMC-TZ4
Exposure time	1/25 sec (0.04)
F Number	f/3.3

ISO speed rating	800
Date and time of data generation	23:05, 5 May 2016
Lens focal length	4.7 mm