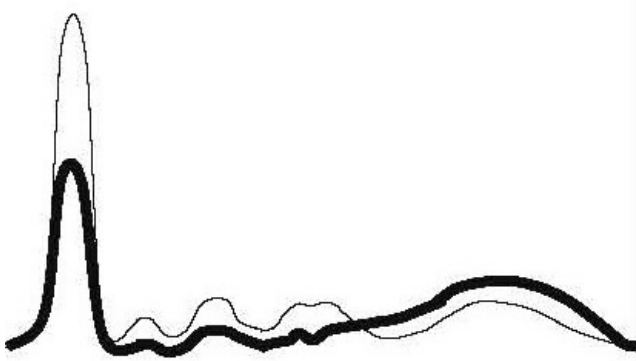


File:ELFO hepatic type.jpg



No higher resolution available.

ELFO_hepatic_type.jpg (412 × 245 pixels, file size: 17 KB, MIME type: image/jpeg)

Summary

Description

Write a description here

Author

Author's name and surname

Source


Source web address or "own work"

Date

Date

File history

Click on a date/time to view the file as it appeared at that time.

	Date/Time	Thumbnail	Dimensions	User	Comment
current	17:22, 13 November 2022		412 × 245 (17 KB)	Sabina (talk contribs)	<div><div><div><div><div><div></div><div><div>{{File description = Write a description here author = Author's name and surname source = Source web address or "own work" date = Date }}</div></div></div></div></div></div></div>

You cannot overwrite this file.

File usage

The following file is a duplicate of this file (more details):

- File:ELFO hepatální typ.jpg

The following page uses this file:

- Serum protein electrophoresis

Metadata

This file contains additional information, probably added from the digital camera or scanner used to create or digitize it.

If the file has been modified from its original state, some details may not fully reflect the modified file.