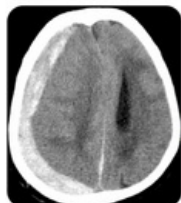


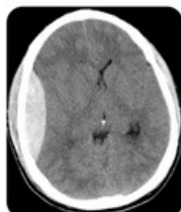
# File:Craniocerebral hematoma.png

## Cerebral Hemorrhages



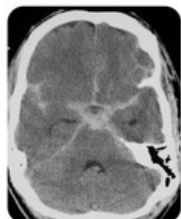
### Subdural hematoma

- Crescent-shaped
- Blood collection between dura and arachnoid matter
- Tear in **bridging veins**
- Alcoholics and elderly are prone



### Epidural hematoma

- Biconvex (lens) shaped
- Blood between dura and skull
- Tearing of **middle meningeal artery**
- Adolescents and young adults (trauma)



### Subarachnoid hemorrhage

- Blood in circle of Willis, cisterns, and fissures
- Rupture of **berry aneurysm**
- Polycystic kidney disease (risk factor)



### Intracerebral hemorrhage

- Blood in parenchyma and ventricles
- Hypertensive vasculopathy
- Territory of **penetrator arteries**

Size of this preview: 320 × 599 pixels.

Original file (571 × 1,068 pixels, file size: 164 KB, MIME type: image/png)

 [Open in Media Viewer](#) 

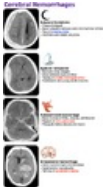
## Summary

**Please choose  
a more precise name  
for your image.** |description = Types of Craniocerebral Hematomas |author = Gerald

Diaz |source = <https://www.grepmed.com/images/4925/neurology-diagnosis-epidural-subdural-subarachnoid> |date = 07/08/22

## File history

Click on a date/time to view the file as it appeared at that time.

	Date/Time	Thumbnail	Dimensions	User	Comment
current	<b>13:01, 7 August 2022</b>		571 × 1,068 (164 KB)	Saronw (talk   contribs)	File:File.png  description = Types of Craniocerebral Hematomas  author = Gerald Diaz  source = <a href="https://www.grepmed.com/images/4925/neurology-diagnosis-epidural-subdural-subarachnoid">https://www.grepmed.com/images/4925/neurology-diagnosis-epidural-subdural-subarachnoid</a>  date = 07/08/22

You cannot overwrite this file.

## File usage

The following page uses this file:

- Craniocerebral trauma