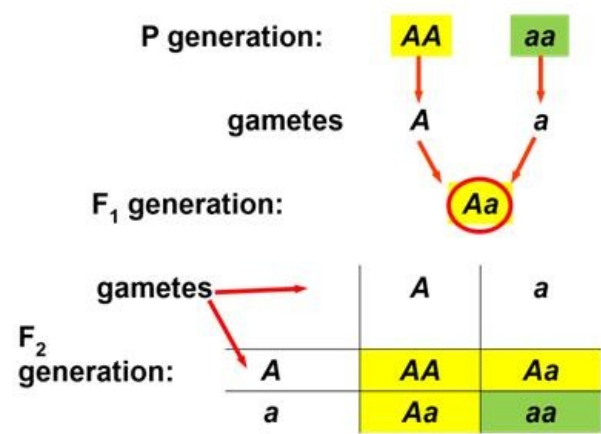


# File:Autosomal recessive inheritance.jpg



No higher resolution available.

Autosomal\_recessive\_inheritance.jpg (438 × 296 pixels, file size: 14 KB, MIME type: image/jpeg)

Open in Media Viewer

**Description**  
Autosomal recessive inheritance

**Author**  
Aleš Panczak, MD

**Source**  
Archive of Aleš Panczak, MD

**Date**  
2017-07-24

## Licensing

Creative Commons Attribution-ShareAlike 3.0 Unported (<http://creativecommons.org/licenses/by-sa/3.0/deed.en>)

## File history

Click on a date/time to view the file as it appeared at that time.

	Date/Time	Thumbnail	Dimensions	User	Comment
current	13:52, 24 July 2017		438 × 296 (14 KB)	Azrael (talk   contribs)	{{File  description = Autosomal recessive inheritance  source = Archive of Aleš Panczak, MD  date = 2017-07-24  author = Aleš Panczak, MD  license = {{cc by-sa 3.0}}} }} Category:Genetics Category:Images

You cannot overwrite this file.

## File usage

The following file is a duplicate of this file (more details):

- File:Autosomal dominant inheritance.jpg

The following page uses this file:

- Autosomal recessive inheritance in pedigree and experiment, examples of traits in man