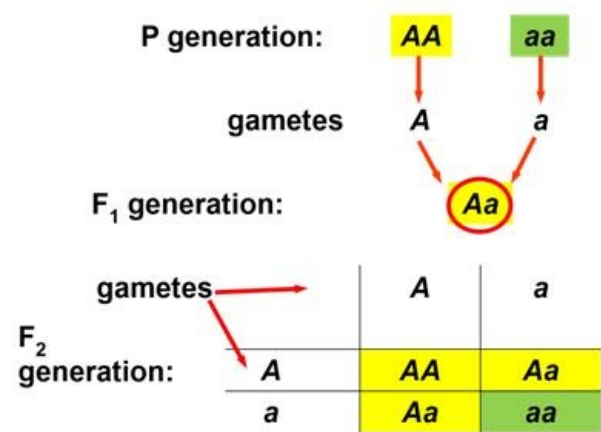


File:Autosomal dominant inheritance.jpg



No higher resolution available.

Autosomal_dominant_inheritance.jpg (438 × 296 pixels, file size: 14 KB, MIME type: image/jpeg)

Open in Media Viewer

Description
Autosomal dominant inheritance

Author
Aleš Panczak, MD

Source
Archive of Aleš Panczak, MD

Date
2017-07-24

Licensing

Creative Commons Attribution-ShareAlike 3.0 Unported (<http://creativecommons.org/licenses/by-sa/3.0/deed.en>)

File history

Click on a date/time to view the file as it appeared at that time.

	Date/Time	Thumbnail	Dimensions	User	Comment
current	13:08, 24 July 2017		438 × 296 (14 KB)	Azrael (talk contribs)	{{File description = Autosomal dominant inheritance source = Archive of Aleš Panczak, MD date = 2017-07-24 author = Aleš Panczak, MD license = {{cc by-sa 3.0}}} }} Category:Genetics Category:Images

You cannot overwrite this file.

File usage

The following file is a duplicate of this file (more details):

- File:Autosomal recessive inheritance.jpg

The following page uses this file:

- Autosomal dominant inheritance in pedigree and experiment, examples of traits in man