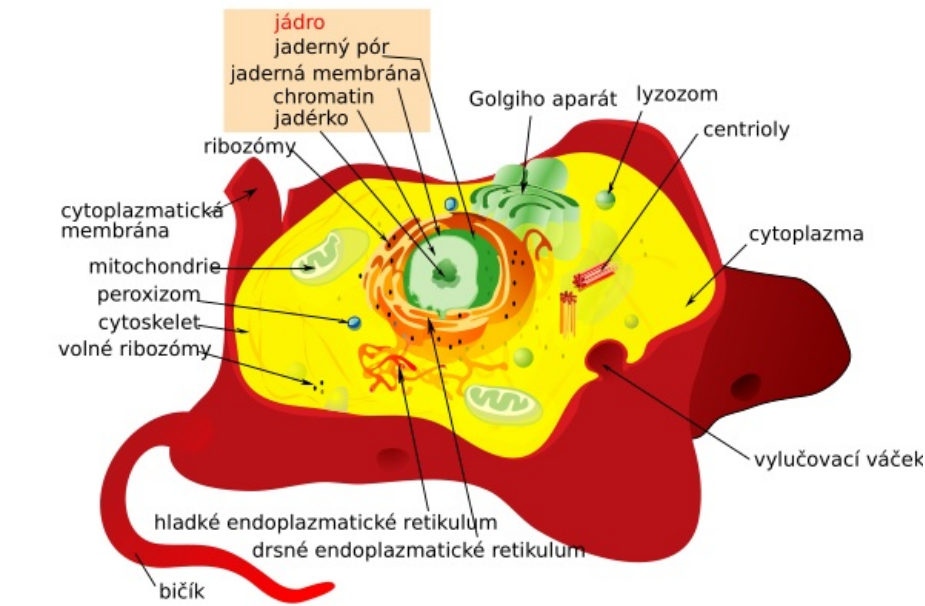


File:Animal cell structure cs.svg



Size of this PNG preview of this SVG file: 600 × 420 pixels.
Original file (SVG file, nominally 600 × 420 pixels, file size: 140 KB)

Summary

Description
Write a description here


Author
Author's name and surname

Source
Source web address or "own work"

Date
Date

File history

Click on a date/time to view the file as it appeared at that time.

	Date/Time	Thumbnail	Dimensions	User	Comment
current	20:56, 14 February 2022		600 × 420 (140 KB)	Hanaahmed (talk contribs)	{{ File description = Write a description here author = Author's name and surname source = Source web address or "own work" date = Date }}

You cannot overwrite this file.

File usage

The following file is a duplicate of this file (more details):

- File:Animal cell structure cs.svg from Wikimedia Commons

The following page uses this file:

- Cell

Metadata

This file contains additional information, probably added from the digital camera or scanner used to create or digitize it.

If the file has been modified from its original state, some details may not fully reflect the modified file.

