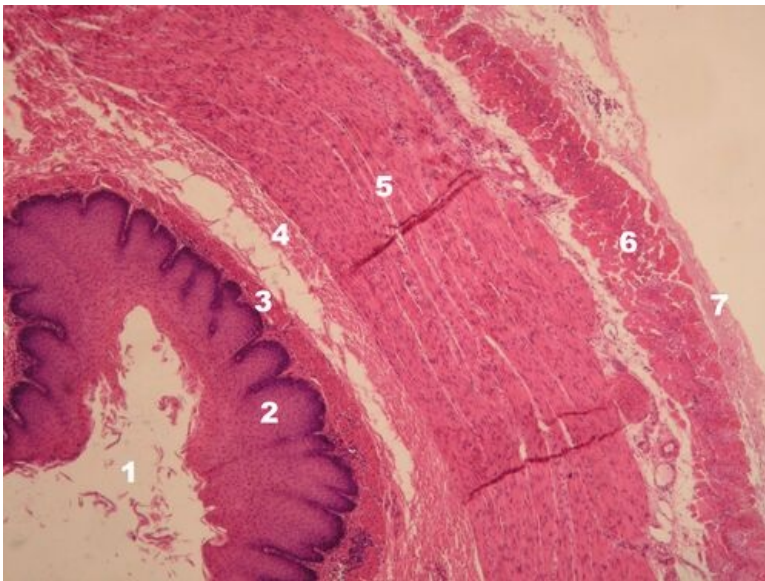


Esophagus (slide)

Overview



Slide 1



Name: Esophagus (HE) - layers of the wall

Description: 1 - esophageal lumen, 2 - non keratinized stratified squamous epithelium, 3 - lamina propria mucosae and lamina muscularis mucosae, 4 - tunica submucosa, 5 - tunica muscularis externa - internal circular muscle tissues, 6 - external longitudinal muscle tissue, 7 - tunica adventitia/serosa

Preparát 2

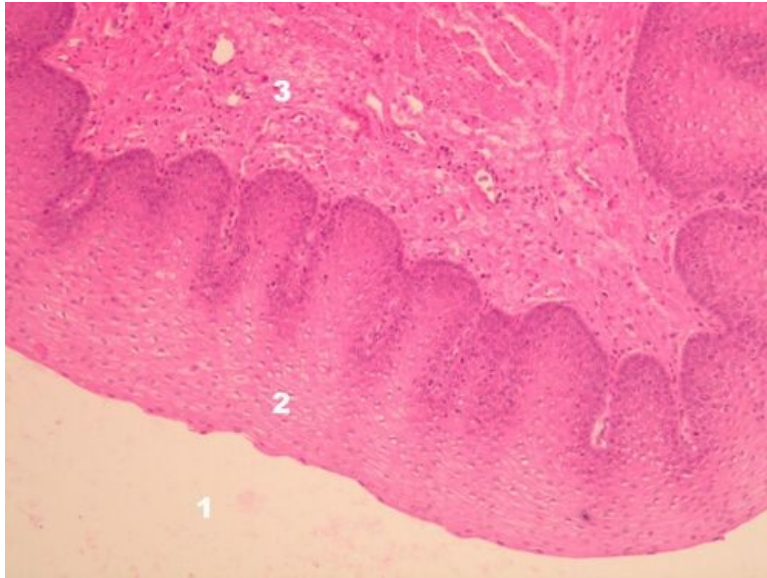


Name: Esophagus (HE) - detail of the epithelium

Description: Esophagus has a typical structure of gastrointestinal tract: tunica mucosa, tunica submucosa, tunica muscularis externa and tunica adventitia. Part of tunica mucosa is non keratinized stratified squamous epithelium - lamina epithelialis (2), lamina propria mucosae (3) and lamina muscularis mucosae

1 - esophageal lumen, 2 - epithelium, 3 - lamina propria mucosae

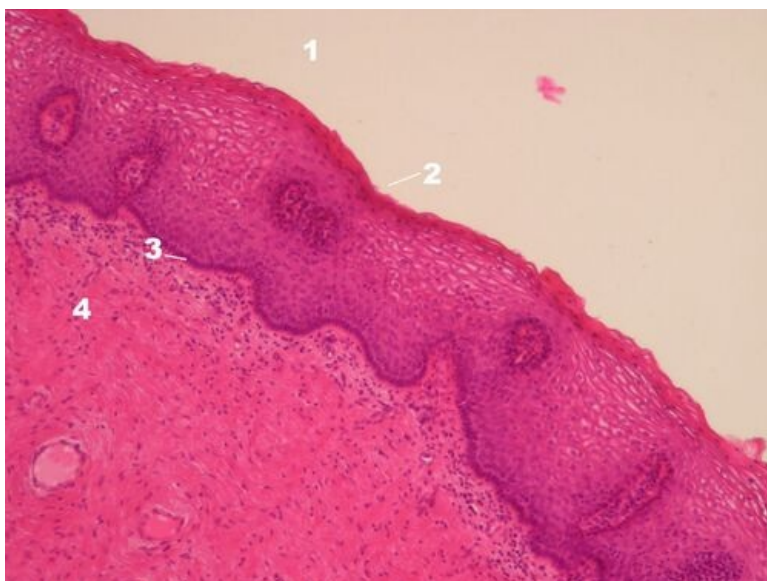
Preparát 3



Name: Esophagus (HE) - detail of the epithelium

Description: 1 - esophageal lumen, 2 - non keratinized stratified squamous epithelium, 3 - lamina propria mucosae

Preparát 4



Name: Esophagus (HE) - detail of the epithelium

Description: 1 - esophageal lumen, 2 - non keratinized stratified squamous epithelium - outer layer with nuclei, 3 - non keratinized stratified squamous epithelium - basal layer, 4 - lamina propria mucosae

Epitely

- Muscular artery (slide)
- Kidney (slide)
- Thyroid gland (slide)
- Large intestine (slide)
- Fallopian tube (slide)
- Bronchus (slide)

- Bladder (slide)
- Skin of the abdomen (slide)
- Esophagus (slide)
- Vagina (slide)
- Lung (slide)
- Small intestine (slide)
- Pancreas (slide)
- Parotis (slide)
- Submandibularis (slide)
- Mamma lactans (slide)
- Mamma nonlactans (slide)
- Stomach fundus (slide)
- Adrenal gland (slide)

Links

- Module Cell basis of medicine (3. LF UK)

Related articles

- Esophagus

Study materials for this slide

- <https://cs.wikipedia.org/wiki/Jícen> (<https://cs.wikipedia.org/wiki/J%C3%ADcen>)