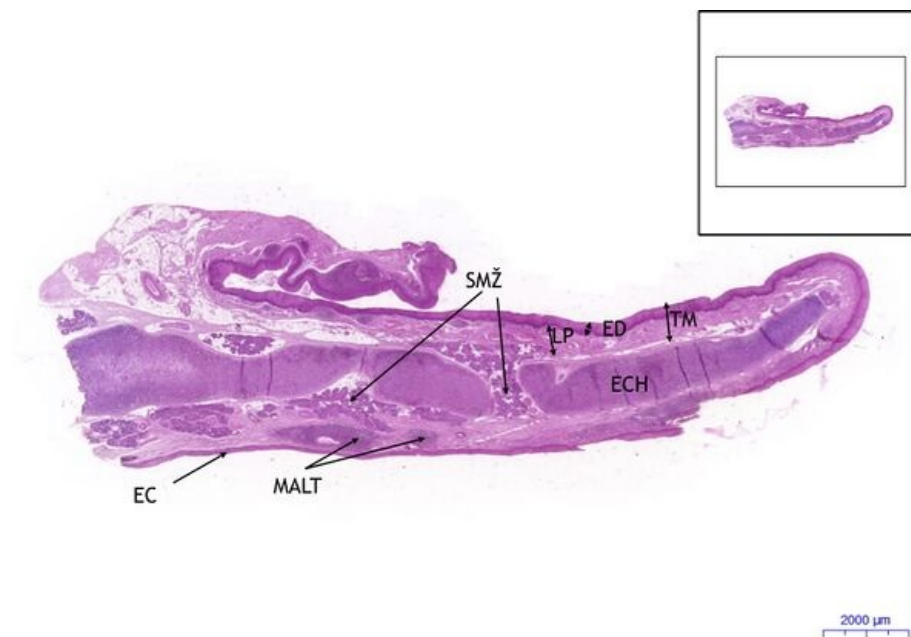


# Epiglottis - HE

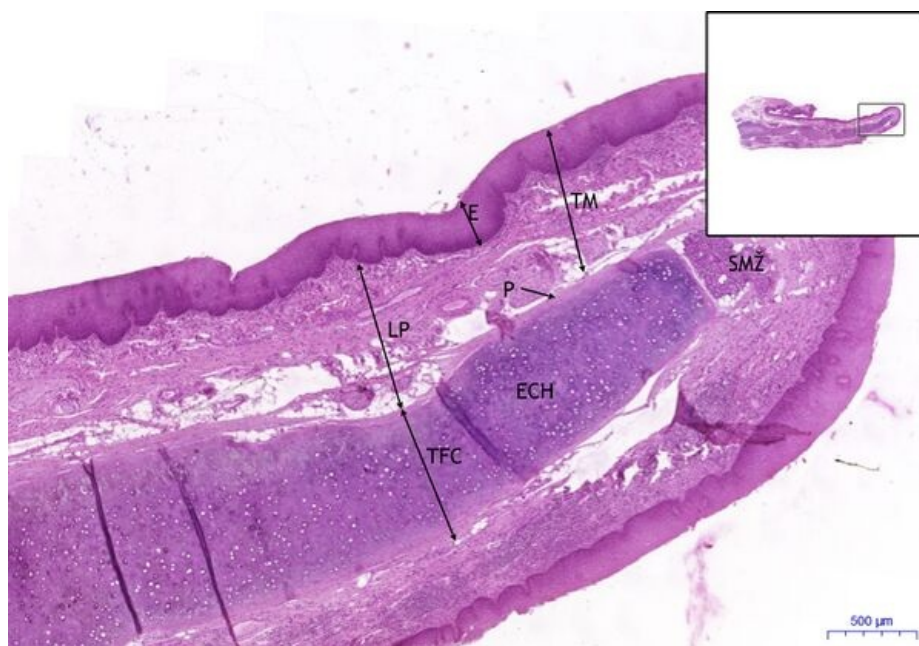
## Epiglottis, HE 0,5x



### Epiglottis:

- 1) **ECH** - elastic cartilage
- 2) **LP** - lamina propria
- a) **SMŽ** - seromucous glands
- b) **MALT** - mucosa associated lymphoid tissue
- 3) **TM** - tunica mucosa
- a) **ED** - stratified squamous epithelium - lingual side (upper)
- b) **EC** - pseudostratified ciliated columnar epithelium - laryngeal side

## Epiglottis, HE 2x



### Epiglottis:

- 1) **TFC** - tunica fibrocartilaginea
- a) **ECH** - elastic cartilage
- b) **P** - perichondrium
- 2) **LP** - lamina propria
- a) **SMŽ** - seromucous glands
- 3) **TM** - tunica mucosa
- a) **ED** - epithelium

## Epiglottis, HE 10x

### Epiglottis:

- 1) **TFC** - tunica fibrocartilaginea
- a) **ECH** - elastic cartilage
- b) **CHC** - chondrocyte
- c) **P** - perichondrium
- 2) **LP** - lamina propria
- a) **SMŽ** - seromucous glands
- b) **TT** - adipose tissue



- 1) MALT** – mucosa associated lymphoid tissue
- 2) K** – capillary (longitudinal)
- 3) TM** – tunica mucosa
  - a) EC** – pseudostratified ciliated columnar epithelium – laryngeal side
  - b) LP** – lamina propria

## Navigation

## Connective and supporting tissue

← Slide 26 | List of the slides | Slide 28 →

## Systema respiratorium

← Slide D6 | List of the slides | Slide D2 →