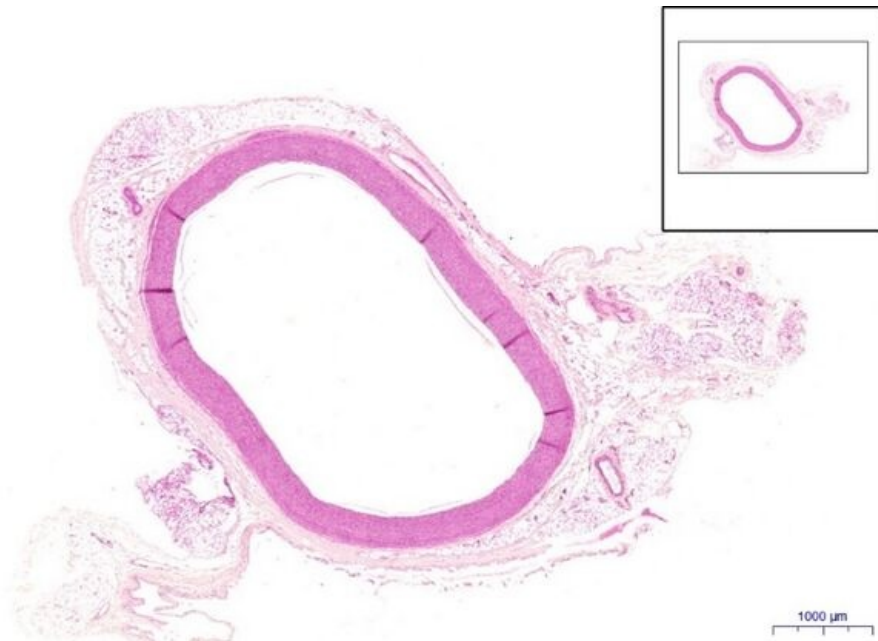


Elastic artery HE

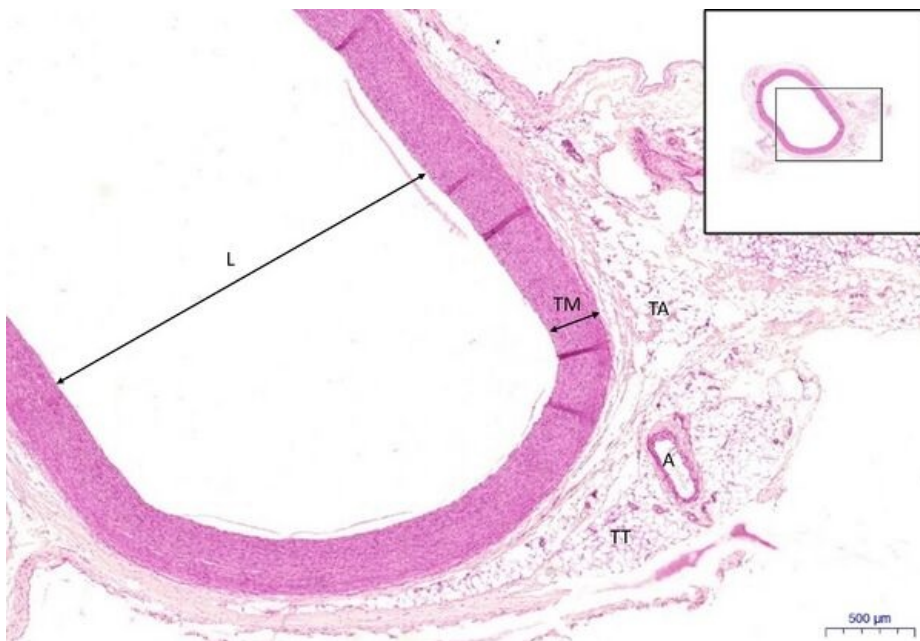
Elastic artery HE 1,1x



Elastic artery HE

- **1. TI** - tunica intima
- **a)E** - endothelium
- **2.TM** - tunica media
- **3.)MEE**- membrana elastica externa
- **3. TA** - tunica adventicia
- **4.TT** - adipose tissue
- **5. A** - artery
- **6. V** - vein (vasa vasorum)
- **7.L** - lumen
- **8.ART** - artefact

Elastic artery HE 2x



Elastic artery HE

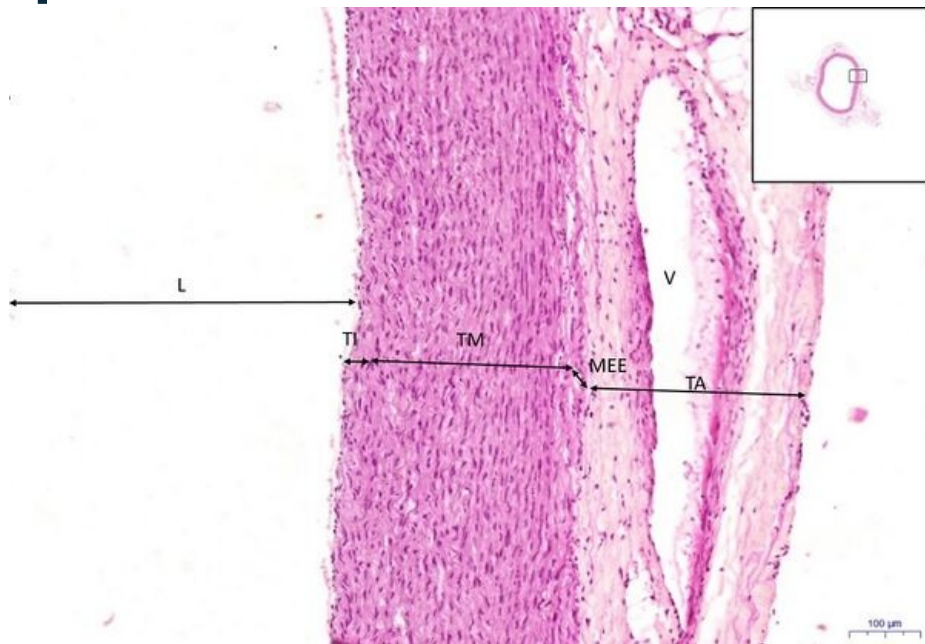
- **2.TM** - tunica media
-
- **3. TA** - tunica adventicia
- **4.TT** - adipose tissue
- **5. A** - artery
- **7.L** - lumen

Elastic artery HE 5x

Elastic artery HE

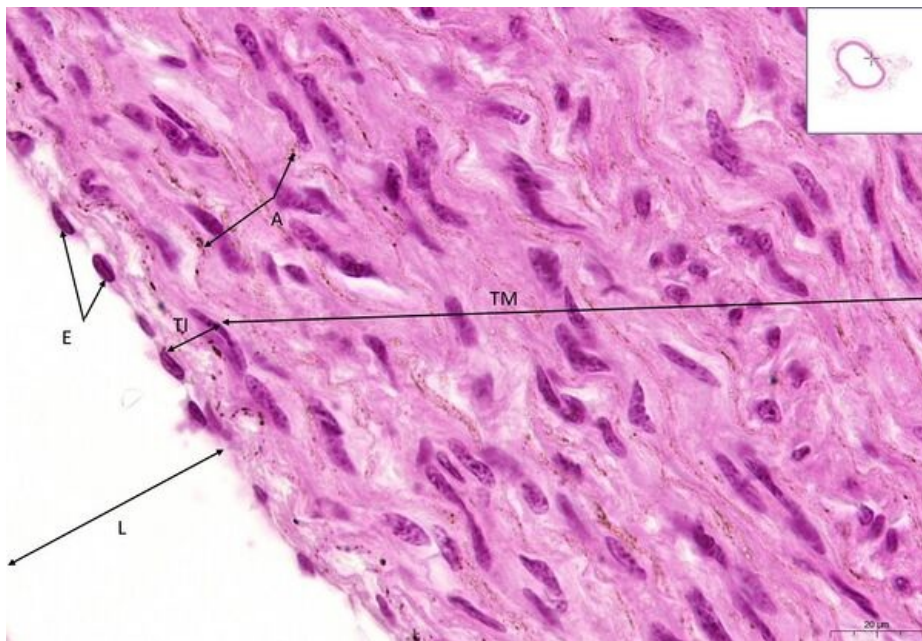
- **1. TI** - tunica intima

- **2.TM** - tunica media
- **3.)MEE**- membrana elastica externa
- **3. TA** - tunica adventicia
-



- **6. V** - vein (vasa vasorum)
- **7.L** - lumen

Elastic artery HE 73x



Elastic artery HE

- **1. TI** - tunica intima
- **a)E** - endothelium
- **2.TM** - tunica media
- **3. TA** - tunica adventicia
- **7.L** - lumen
- **8.A** - artefact (black dots)

Navigation

Navigation: Circulatory system

← Preparát C9 | List of preparations | Preparát C2 →