

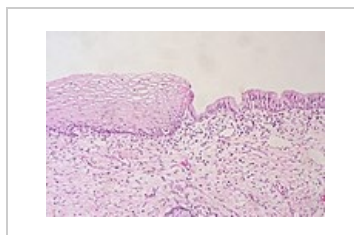
Ectropium (gynecology)

A change in the epithelium of the mucous membrane of the cervix, in which there is **an eversion of the epithelium of the endocervix** (single-layered columnar epithelium) **into the region of the exocervix** (squamous epithelium). The acidic vaginal environment disrupts the area of the less resistant cylindrical epithelium, thereby causing erosive and inflammatory processes. Prolonged exposure to an acidic environment leads to the formation of **a transformation zone** (squamous cell metaplasia), which is also the area with the most frequent occurrence of dysplastic changes.

During colposcopy, we observe deep red areas with a tendency to light bleeding. Ectropion can be caused by hormonal changes, inflammation or trauma (eg after childbirth). These lesions can easily be mistaken for a tumor process. The finding of ectropion is physiological in multiparous. In the case of nulliparous women, we are talking about **ectopia**.



Ectropion during colposcopy



Squamocolumnar junction

Links

Related articles

- Cervix uteri
- Tumors of the cervix
- Cervical precancers

References

- BECKMANN, Charles R. B. *Obstetrics and gynecology*. 7. edition. Philadelphia : Wolters Kluwer Health/Lippincott Williams & Wilkins, c2014. ISBN 978-1-4511-4431-4.
- KUDELA, . *Základy gynekologie a porodnictví pro posluchače lékařské fakulty*. 2. edition. Olomouc. 2008. ISBN 9788024419756.
- ROB, Lukáš – MARTAN, Alois – CITTERBART, Karel, et al. *Gynekologie*. 2. edition. Praha : Galén, 2008. 390 pp. ISBN 978-80-7262-501-7.