

Ciliary ganglion

The **ciliare ganglion** is a parasympathetic ganglion that ranges in size from 1.5 mm to 2 mm. The ciliary ganglion is located in the orbit lateral to the optic nerve and produces up to 3000 neurons.

Afferent branches

- **Radix parasympathica** : ncl. accessory oculomotor nerves (Edinger-Westphali) → oculomotor nerve → r. inferior oculomotor nerves → radix parasympathica ganglii ciliaris.
- **Radix sympathica** : ncl. intermediolateralis (C8-Th1, centrum ciliospinale (Budgei)) → n. spinalis → r. communicans albus gangliorum cervicalium trunci sympathici → gangl. cervicale superius → plexus caroticus internus → radix sympathetica ganglii ciliaris.
- **Radix sensitiva** : bulbus oculi → passes through the ganglion → r. communicans cum ganglio ciliaris, n. nasociliaris.

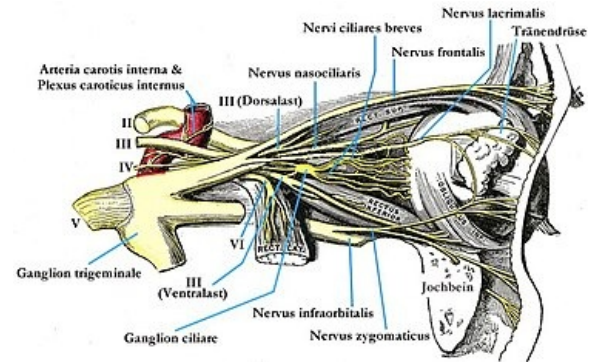
Efferent branches

- **Nervi ciliares breves**

Links

References

- PETROVICKÝ, . *Anatomie s topografickými a klinickými aplikacemi*. 1. edition. Martin : Osvěta, 2002. vol. 3. ISBN 80-8063-048-8.



This image may contain annotations. Hover over the image to view. Innervation of the eye