

# Cervical fascia

The **cervical fascia** is made up of three sheets: *lamina superficialis*, *pretrachealis* et *prevertebralis*.

## Lamina superficialis fasciae cervicalis

**Scope:** *mandible*, *processus mastoideus*, occipital region - ventral surface of *manubrium sterni*, *clavicle*, *acromion*. Caudally, it passes smoothly into the superficial fascia of the chest and the fascia of the deltoid muscle.

### Course:

- It is placed behind *the platysma muscle*;
- It envelops *the sternocleidomastoid muscle* and *the trapezius muscle*, being named *fascia nuchae* in its extent;
- It fuses with the tongue.

## Lamina pretrachealis fasciae cervicalis

**Range:** *os hyoideum* – after *the muscoli infrahyoidei* to the dorsal surface of the *manubrium sterni*. Laterally from *the omohyoid muscle*, it passes into *the lamina superficialis of the cervical fascia*.

### Course:

- the *vagina carotica* departs from it.

## Lamina prevertebralis fasciae cervicalis

Scope: covers prevertebral muscles and *musculi scaleni*.

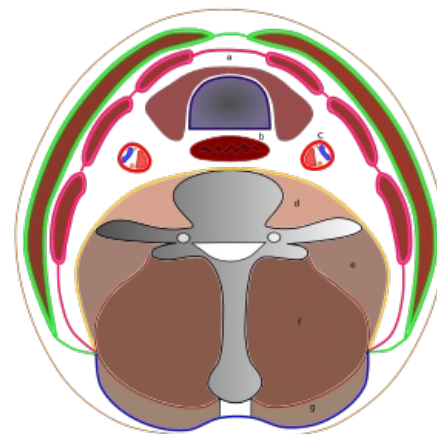
## Links

### Related Articles

- Neck muscles

### References

- ČIHÁK, Radomír. *Anatomie I*. 2. edition. Praha : Grada, 2001. 516 pp. ISBN 978-80-7169-970-5.



This image may contain annotations.

**Scheme of the neck fascia:** a) *glandula thyroidea* and *trachea*; b) *esophagus*; c) *carotid vagina*; d) *longus colli muscle*; e) *mm. scaled*; f) a group of deep neck muscles; g) *trapezius muscle*. Green – *lamina superficialis fasciae cervicalis* (with *mm. sternocleidomastoidei*); pink – *lamina pretrachealis fasciae cervicalis* (muscles – from front to back – *sternohyoid muscle*, *sternothyroid muscle*, *omohyoid muscle*); yellow – *lamina prevertebralis fasciae cervicalis*; blue – *fascia nuchae*.