

Canalis obturatorius

The **canalis obturatorius** is located near the sulcus obturatorius on the os coxae in the membrana obturatoria enclosing the foramen obturatum.

Content

A nerve-vascular bundle from the small pelvis enters the canalis obturatorius and leads to the medial side of the thigh. Contains:

- nervus obturatorius, which just after passing the branches to:
- *R. anterior, R. posterior,*
- *N. obturatorius accessorius,*
- obturatory artery,
- obturatory vein.

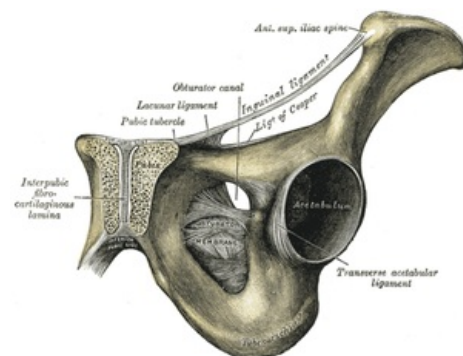
Links

Related Articles[edit

- Pánev
- Nervus obturatorius

Related literature

- GRIM, Miloš and Rastislav DRUGA. *Basics of anatomy. 5., Anatomy of body landscapes.* 1st edition. Praha : Galén : Karolinum, 2002. 119 pp. ISBN 80-7262-179-3.



Canalis obturatorius and pelvic structures

Media boundaries	obturator membrane
Lateral boundaries	obturator membrane
Content	N. obturatorius, A. and V. obturatoria

<https://www.wikiskripta.eu/w/Soubor:Gray321>.

Kategorie:Topografická anatomie Kategorie:Anatomie