

# Burri dyeing

This method allows a negative representation of bacterial envelopes .

## Method

1. Apply the bacteria to a slide in a drop of ink ;
2. using the second slide, spread the drop evenly over the entire surface, waiting for it to dry;
3. repaint with crystal violet .

The bacteria appear purple, the background black and the mucous membrane does not stain .

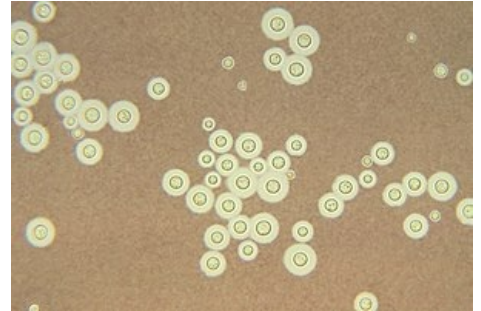
## Links

### related articles

- Gram stain
- Giemsa staining

## Source

- RYŠKOVÁ, Olga, et al. *Instructions for practical exercises in medical microbiology*. 1st edition. Prague: Karolinum, 1997. ISBN 80-7184-307-5 .



Cryptococcus neoformans