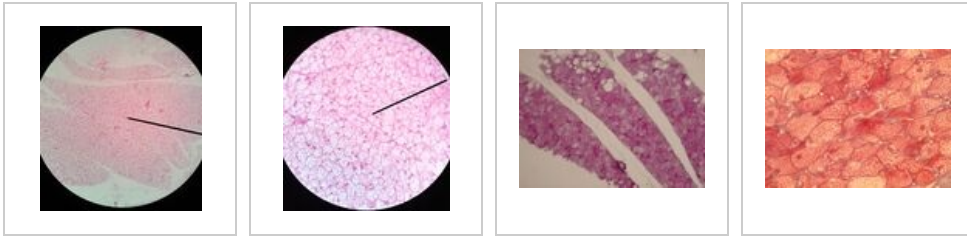


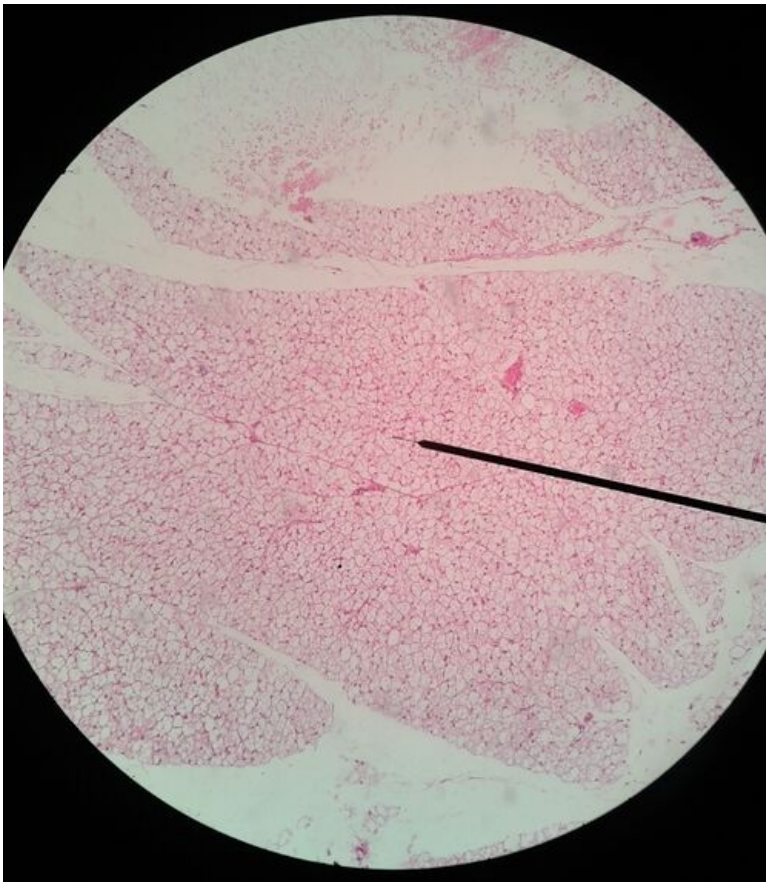
Brown fat (slide)

Brown fat

Overview



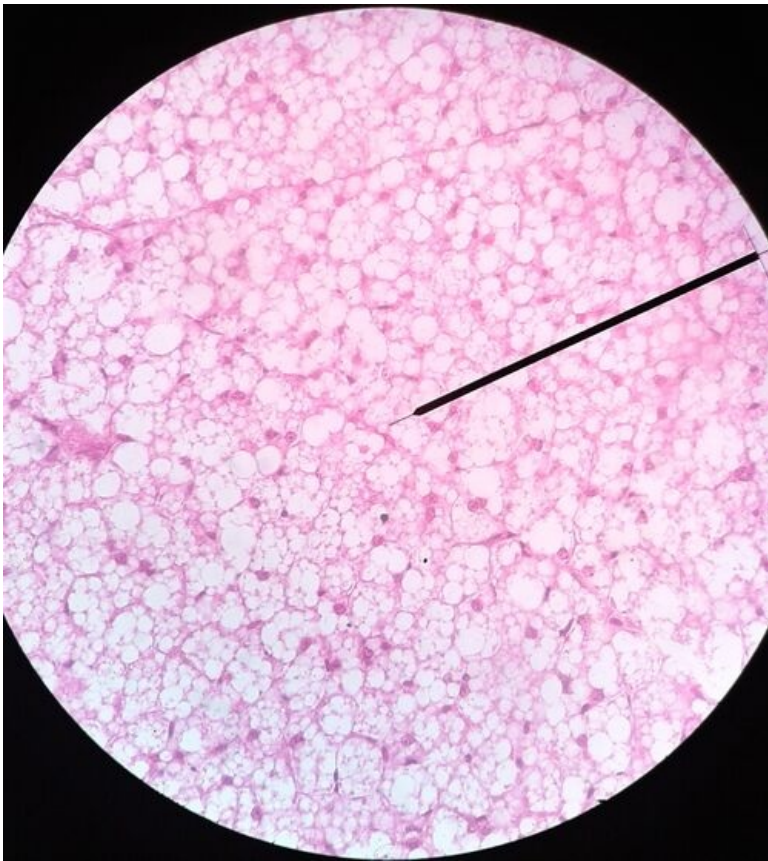
Slide 1



Title Brown fat HE

Description: Brown Adipose Tissue cells - multilocular contain multiple lipids droplets and large numbers of mitochondria. In humans, brown fat is important after birth for thermoregulation (non-shivering thermogenesis). Brown fat cells probably persist in the body throughout life, but the volume of brown adipose tissue decreases relatively. Thus, in adulthood, white fat. significantly predominates.

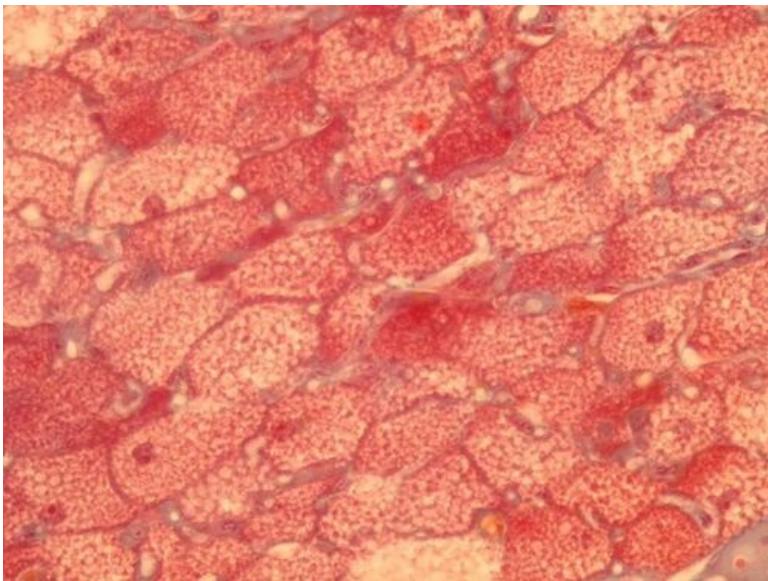
Slide 2



Title: Brown fat

Description: Cells of brown adipose tissue at higher magnification. Cells have a nucleus in the center and multiple lipid droplets.

Slide 3



Title: Brown fat AZAN

Description: Brown fat cells - detail.

Binders

Mesenchyme (slide)

Umbilical cord (slide)

Aorta (slide)

Brown fat (slide)

White fat (slide)

Tendon (slide)

Articular cartilage (slide)

Epiglottis (slide)

Desmogenous ossification (slide)

Enchondral ossification (slide)

Lamellar bone (slide)

Links

Module Cellular Foundations of Medicine (3. LF)

Study materials for the slide

Adipose tissue

Brown fat