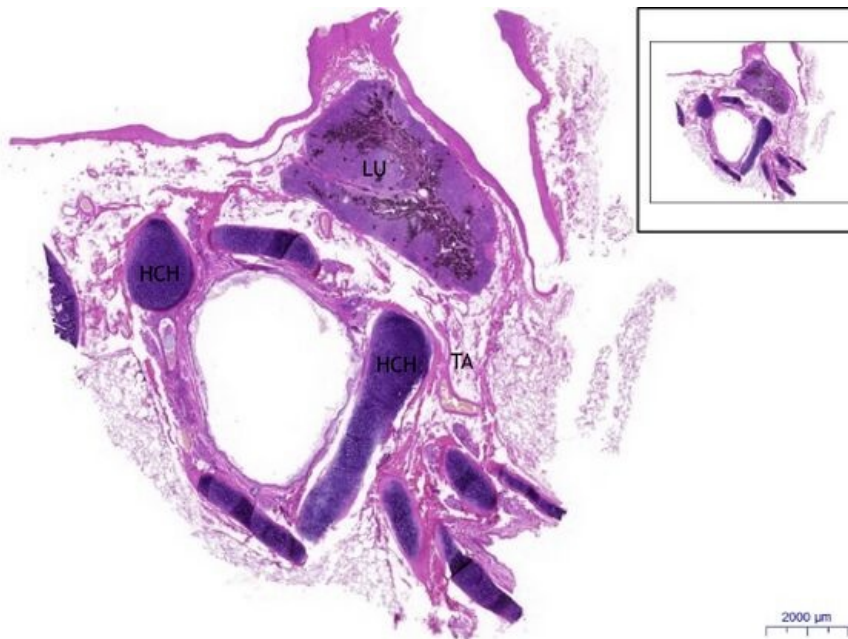


Bronchus segmentalis HE

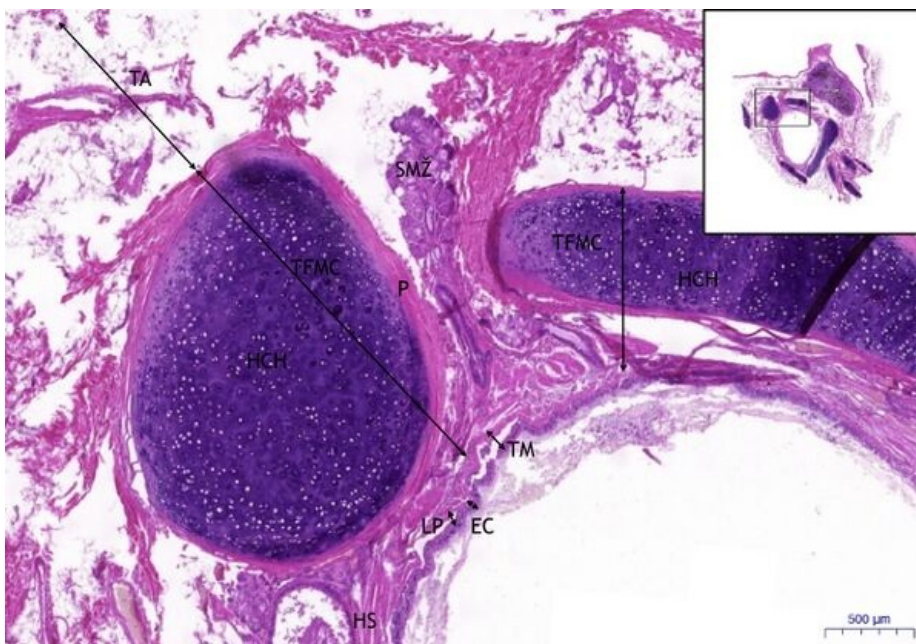
Bronchus segmentalis, HE 0,5x



Bronchus segmentalis:

- 1) **TFMC** – tunica fibro-musculo-cartilaginea
- a) **HCH** – hyaline cartilage
- 2) **TA** – tunica adventitia
- 3) **LU** – lymph node

Bronchus segmentalis, HE 2x



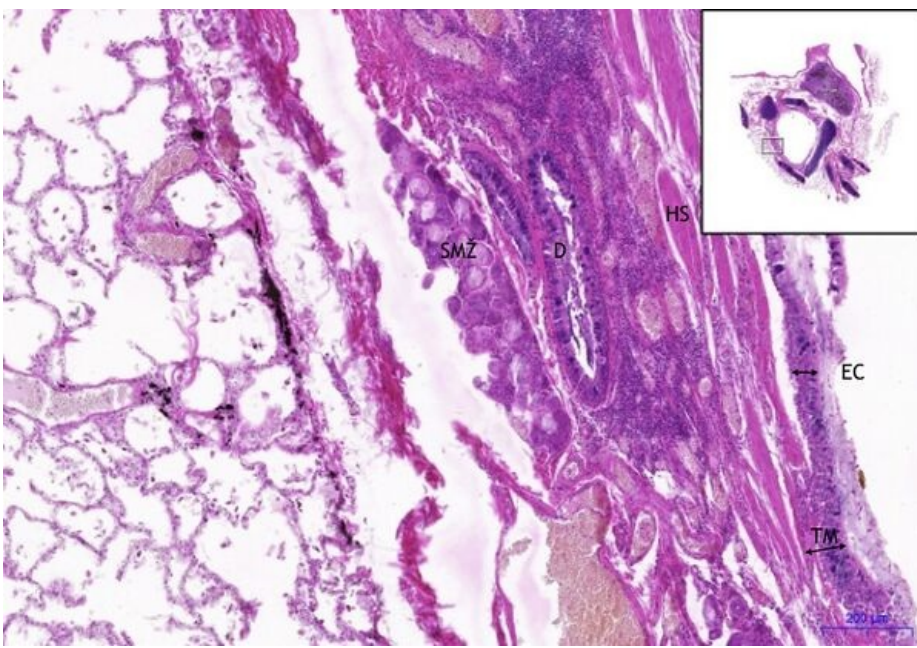
Bronchus segmentalis:

- 1) **TM** – tunica mucosa
- a) **EC** – pseudostratified ciliated columnar epithelium
- b) **LP** – lamina propria
- c) **SMŽ** – seromucous gland
- d) **HS** – smooth muscle
- 2) **TFMC** – tunica fibro-musculo-cartilaginea
- a) **HCH** – hyaline cartilage
- b) **P** – perichondrium
- 3) **TA** – tunica adventitia
- 4) **LU** – lymph node

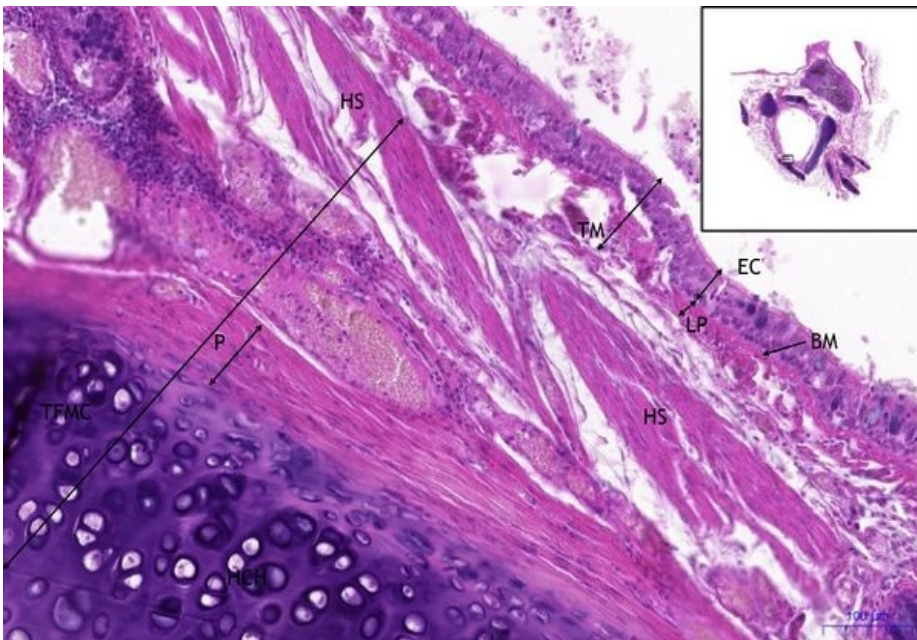
Bronchus segmentalis, HE 5x

Bronchus segmentalis:

- 1) **TM** – tunica mucosa
- a) **EC** – pseudostratified ciliated columnar epithelium
- b) **SMŽ** – seromucous gland
- c) **HS** – smooth muscle
- 2) **D** – ductus



Bronchus segmentalis, HE 10x



Bronchus segmentalis:

- 1) **TM** - tunica mucosa
- a) **EC** - pseudostratified ciliated columnar epithelium
- b) **BM** - basal membrane
- c) **LP** - lamina propria
- d) **HS** - smooth muscle

2) **TFMC** - tunica fibro-musculo-cartilaginea

- a) **HCH** - hyaline cartilage
- b) **P** - perichondrium

Navigation

Respiratory system		
← Preparation D3	List of preparations	Preparation D5 →