

Bronchiectatic syndrome (internal propaedeutics)

Bronchiectasis means enlargement of the bronchi.

Characteristics

Dilated lumen of the bronchi, accumulation of secretions - expectoration of purulent sputum, especially in the morning.

Division

By occurrence:

- localized;
- diffuse.

By content:

- emptied;
- filled with secretion.

By origin:

- acquired (most);
- innate.

Tap

- clear (emptied);
- darkened (secretion).

Listening

- respiration vesicular;
- moist, accented crackles over the lower lobes of the lungs.

We confirm the diagnosis **by bronchography** .

See the Bronchiectasis page for more detailed information .

Links

Related Articles

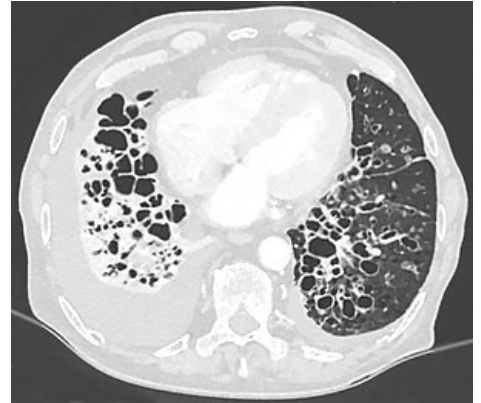
- Examination of the chest from the perspective of a pulmonologist
- Basic pulmonary syndromes
- Bronchiectasis

References

- CHROBÁK, Ladislav, et al. *Propedeutics of internal medicine*. 2nd edition. Prague: GRADA Publishing, 2007. 243 pp. ISBN 978-80-247-1309-0 .

[Expand]

Basic pulmonary syndromes



Massive bronchiectasis

BEETLE, Ladislav, et al. *Propedeutics of internal medicine*. 2. edition. Prague : GRADA Publishing, 2007. 243 pp. ISBN 978-80-247-1309.