

# Biliverdin

**Biliverdin** is a green bile pigment formed as a partial metabolite in macrophages during the breakdown of heme. Its reduction produces the bile pigment bilirubin, which has a yellow color. Under physiological conditions, human bile contains only a small amount of biliverdin.

## Links

### Related articles

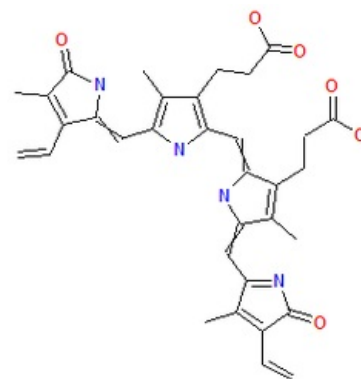
- Bile
- Heme • Hemoglobin

### External links

- Biliverdin (Czech wikipedie)
- Biliverdin (English wikipedie)

### Source

ŠVÍGLEROVÁ, Jitka. *Biliverdin* [online]. The last revision 2009-02-18, [cit. 2010-11-12]. <<https://web.archive.org/web/20160416224340/http://wiki.lfp-studium.cz/index.php/Biliverdin>>.



Biliverdin