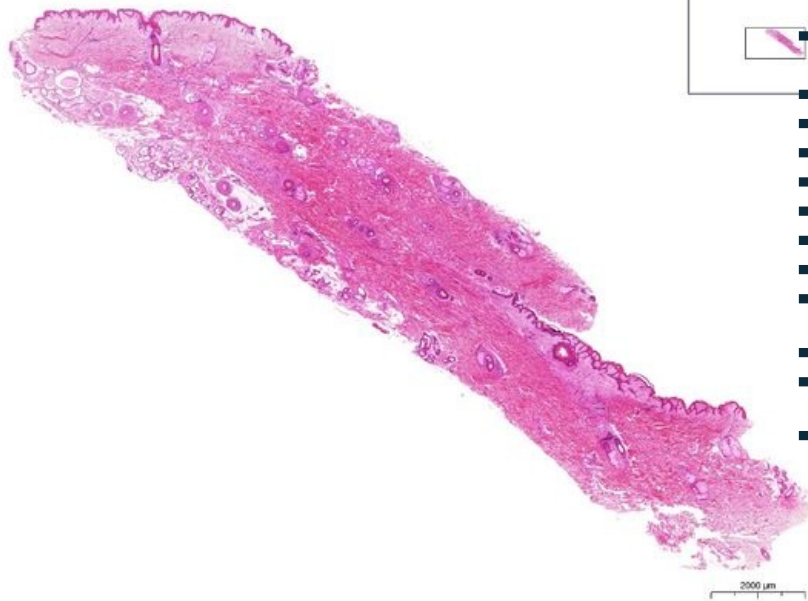


Axilla HE

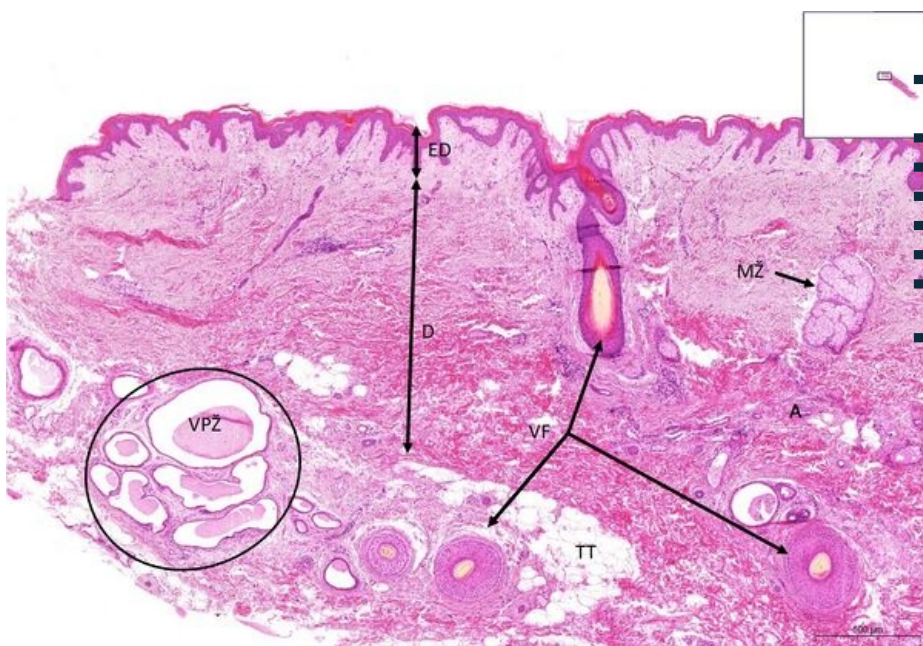
Axilla - HE 0,7x



Axilla HE

- 1. **ED** - stratified squamous epithelium - keratinized
- 2. **D** - dermis
- a) **PP** - pars papillaris
- b) **PR** - pars reticularis
- 3. **VPŽ** - big sweat glands
- 4. **VF** - hair follicle
- 5. **MŽ** - sebaceous gland
- 6. **TT** - adipose tissue
- 7. **C** - blood vessels

Axilla - HE 3,3x

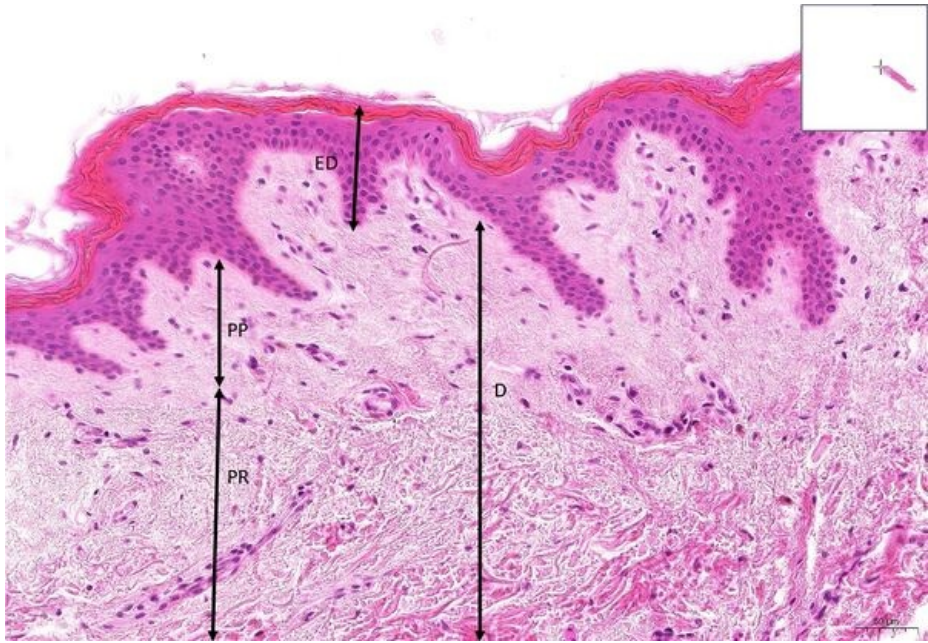


Axilla HE

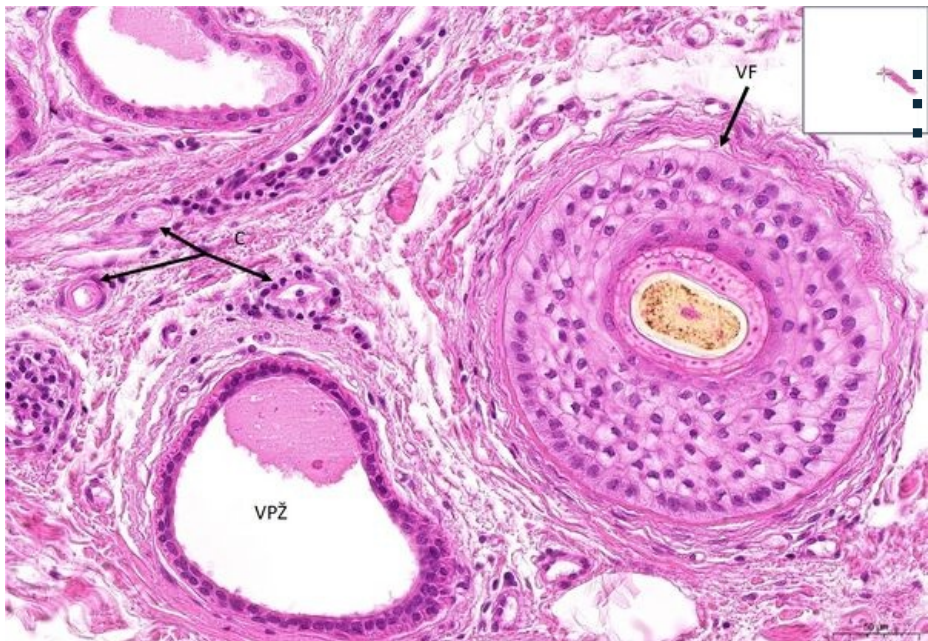
- 1. **ED** - stratified squamous epithelium - keratinized
- 2. **D** - dermis
- 3. **VPŽ** - big sweat glands
- 4. **VF** - hair follicle
- 5. **MŽ** - sebaceous gland
- 6. **TT** - adipose tissue
- 7. **C** - blood vessels

Axilla - HE 20x

- **Axilla HE**
- **ED** - stratified squamous epithelium - keratinized
- 2. **D** - dermis
- a) **PP** - pars papillaris
- b) **PR** - pars reticularis



Axilla - HE 27,4x



Axilla HE

- 3. VPŽ - big sweat glands
- 4. VF - hair follicle
- 7. C - blood vessels

■

Navigation

Navigation: Epithelial tissue

← Preparation n. 14

List of slides

Preparation n. 16

→

Navigation

Navigation: Skin

← Preparation K1

List of slides

Preparation K3

→