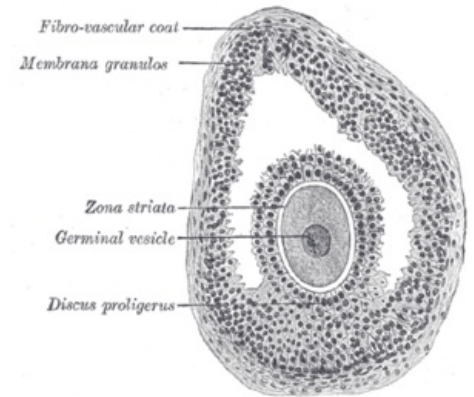


Antral follicle

The antral or secondary follicle is one of several stages of development of the growing **Graafian follicle**.

Development to the antral follicle stage

As the follicle matures, changes occur - the oocyte grows rapidly, flat follicular cells **proliferate** and take on a **cuboidal shape**. Follicular cells divide and subsequently form the **membrana granulosa** (multilayered epithelium). At this point, we call the follicle a multilayered **primary follicle**. Between the oocyte and the follicular cells, a wide *envelope* is formed - **the zona pelucida**. **The ovarian stroma** adjacent to the follicle also differentiates in the **theca folliculi** (we distinguish between theca interna and theca externa). **As the follicle grows, a fluid called liquor folliculi** accumulates between the granulosa cells. The cavities created in this way with the liquor folliculi then merge and form a cavity - the **antrum**. This follicle is already referred to as a **secondary** (antral) follicle.



Links

Related articles

- Ovary
- Menstrual cycle
- Graafian follicle

References

- JUNQUIERA, L. Carlos, José CARNEIRO, and Robert O. KELLEY, et al. *Basics of histology*. 1st edition. Jinočany: H & H, 1997. 502 pp. ISBN 80-85787-37-7 .